

Exterior Insulation and Finish System (EIFS)

Stef Para

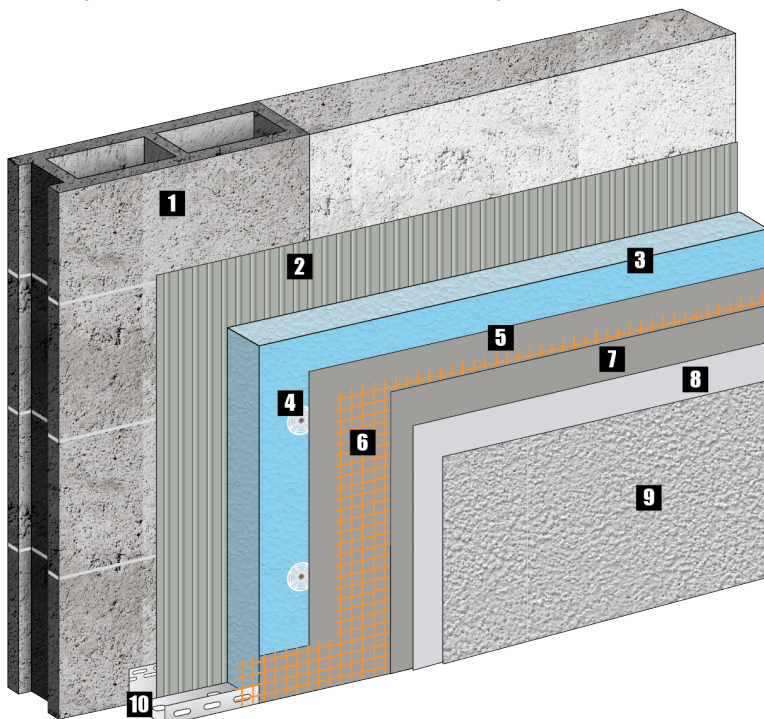
Impact resistant EIF System using extruded polystyrene insulation

Rainscreen EIF System which incorporates a secondary line of protection in conjunction with extruded polystyrene insulation panels. Always apply the adhesive on the insulation with a notched trowel to form vertical grooves. These grooves will be used for adhesion purposes and form cavities for the evacuation of moisture behind the insulation. **Used for residential or commercial buildings that are located close to the ground or if high impact resistance is required.**

Products used for installation

(See technical product data sheets for more information)

- Extruded flat insulation panel
- *Fiberglass Mesh*
- *Stef Barrier Plus*
- *Stef 5000*
- *Stef Base Coat* NCBC
- *Stef Roll-on*
- *Stef Finish & Stef Architectural Coat*



- 1** Substrate (Concrete or cement block)
- 2** Air and water penetration barrier membrane. *Stef Barrier Plus* applied with jagged trowel which forms grooves
- 3** Flat insulation board of extruded polystyrene
- 4** Mechanical fasteners to attach insulation panels
- 5** *Stef 5000* base coat
- 6** Fiberglass mesh embedded in the base coat
- 7** *Stef Base Coat* NCBC base coat
- 8** *Stef Roll-on* primer coat
- 9** *Stef Finish & Stef Architectural Coat* finish coat
- 10** Stef starter flashing

The application instructions and performance characteristics are based on information we believe to be reliable. They are offered to the best of our knowledge, but without guarantee, as conditions and methods of use of our products are beyond our control.

