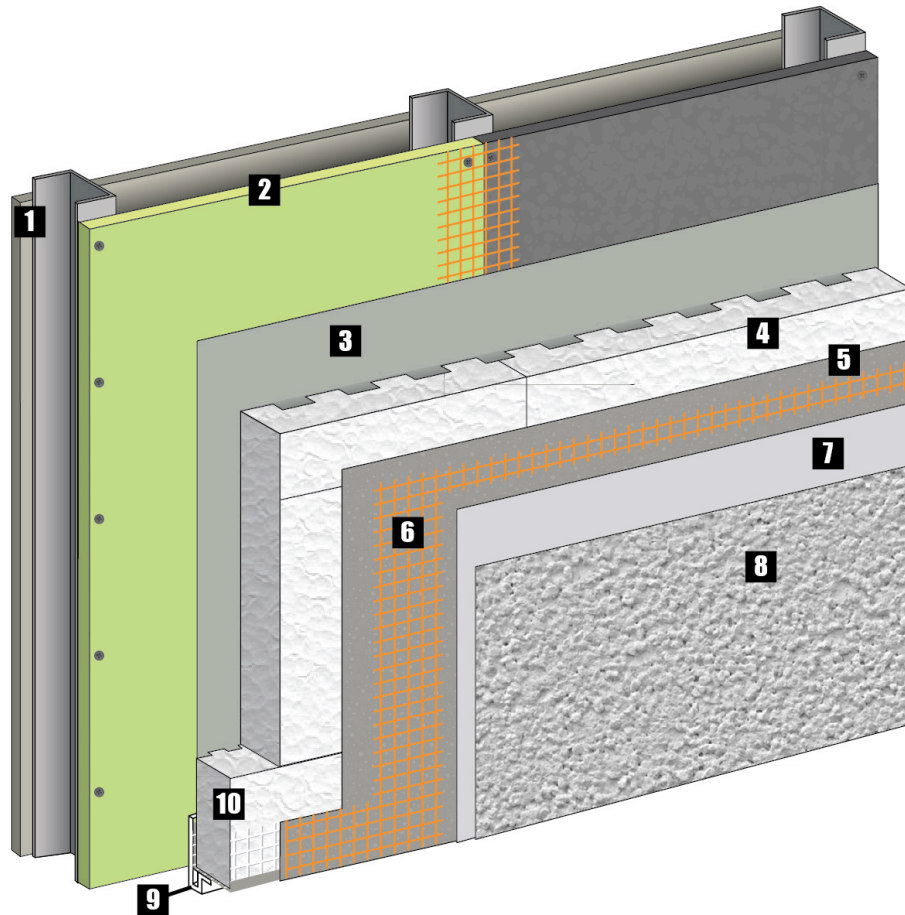
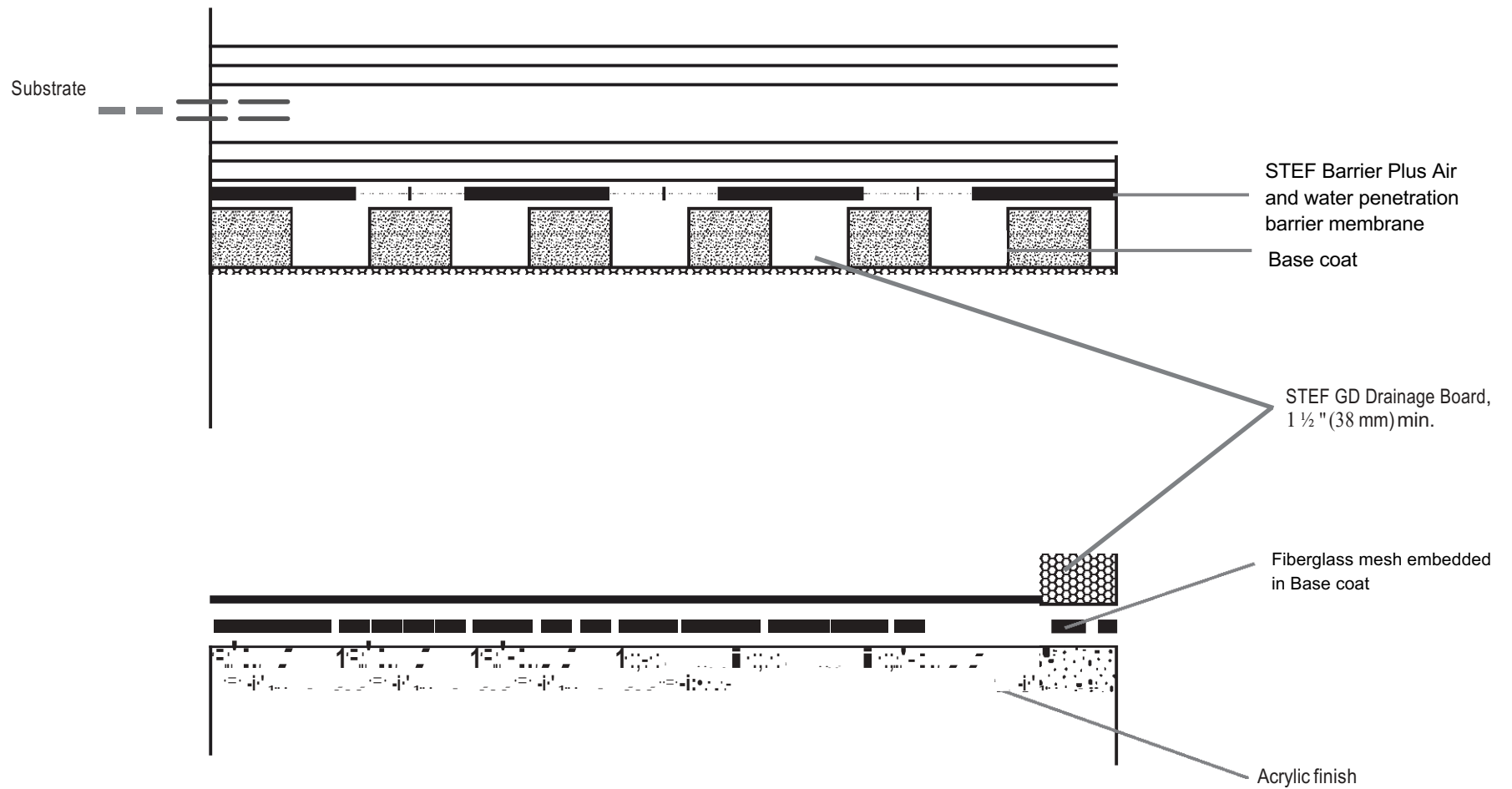


**Fig.1 Installation Detail**



- 1. - Steel structure
- 2. - Substrate (Concrete, concrete blocks, concrete panels or gypsum)
- 3. - **Stef Barrier Plus** - Air and water penetration barrier membrane
- 4. - **Stef GD drainage board / Imperméa**
- 5. - **Stef Prep Coat** - Adhesive and base coat
- 6. - Fiberglass mesh embedded in base coat
- 7. - **Stef Roll-on** on primer coat
- 8. - **Stef Finish & Stef Architectural Coat** in finish coat
- 9. - PVC Starter strip or Metal Flashing
- 10. - Stef GD Drainage board starter strip

**Fig.2 Installation Detail**



**Fig 4. EPS Board**

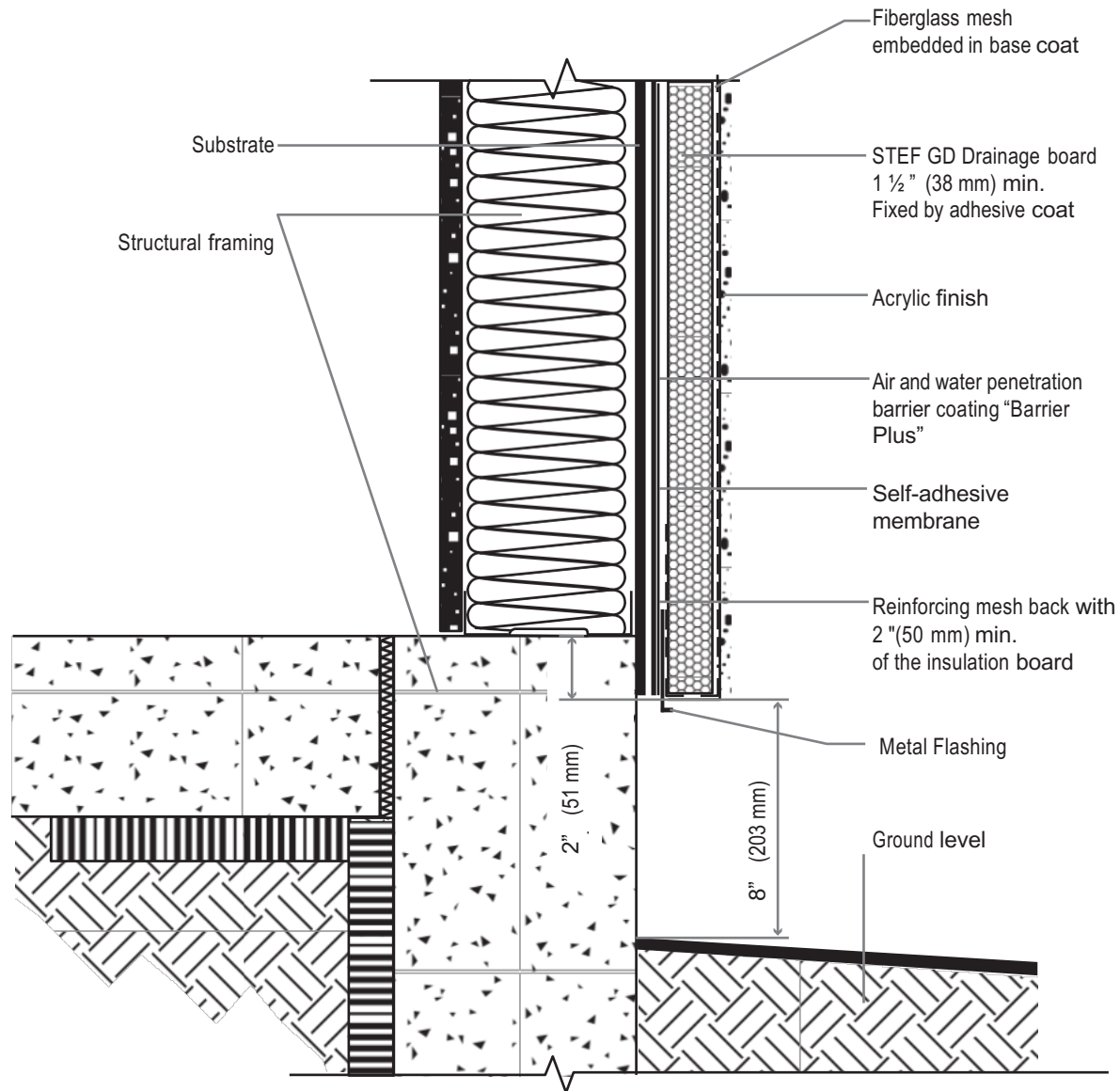
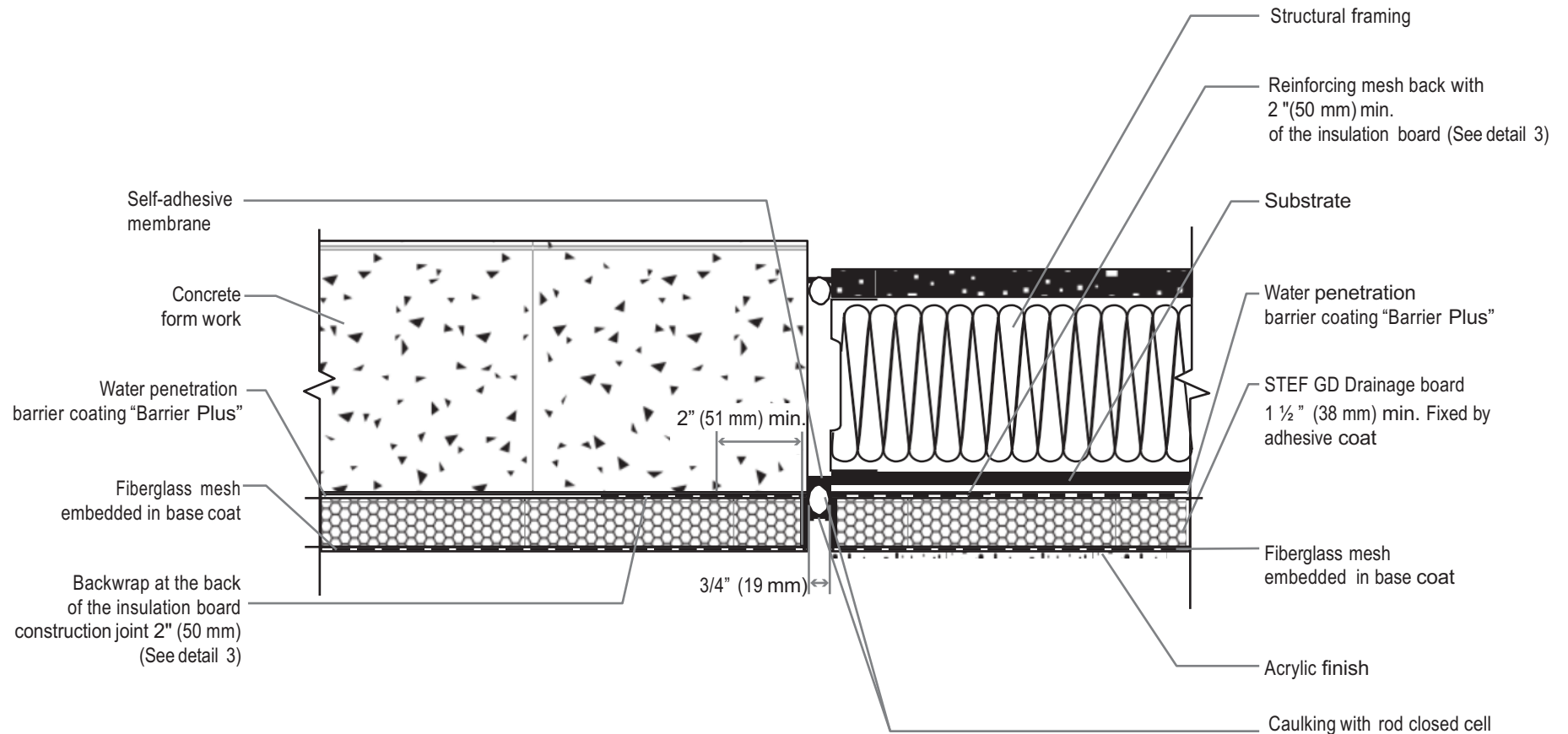
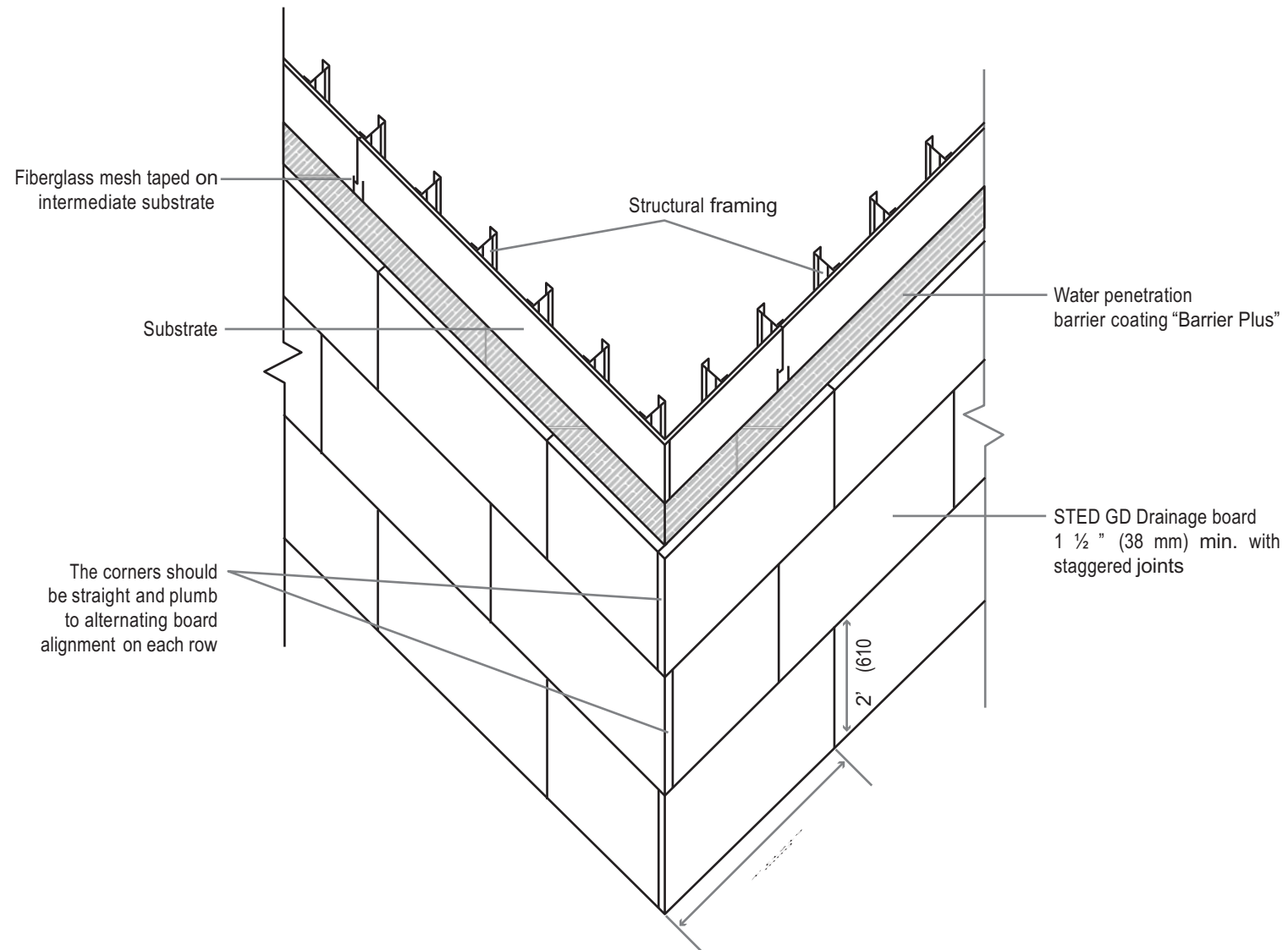


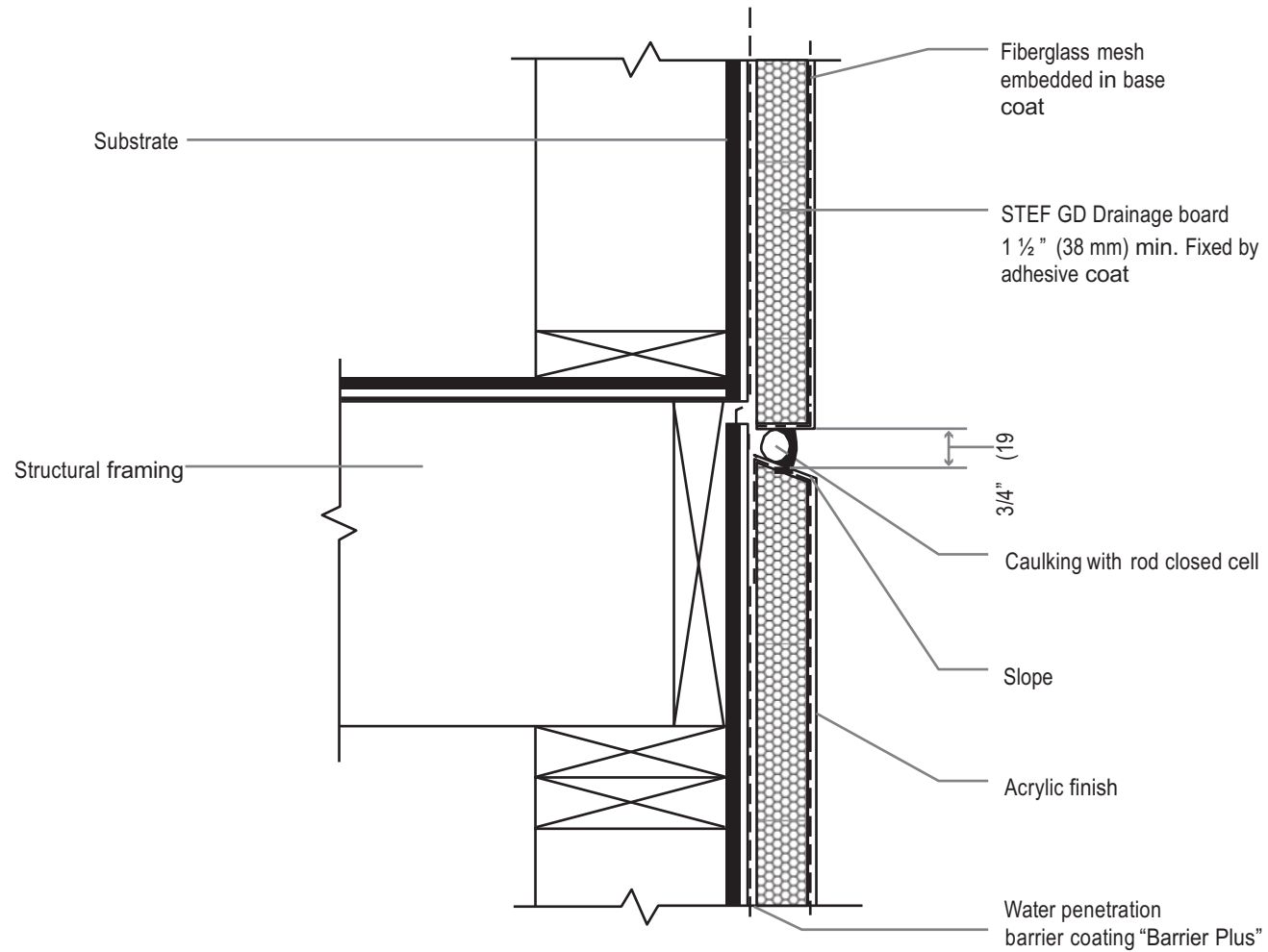
Fig 5 . Ground Foundation detail



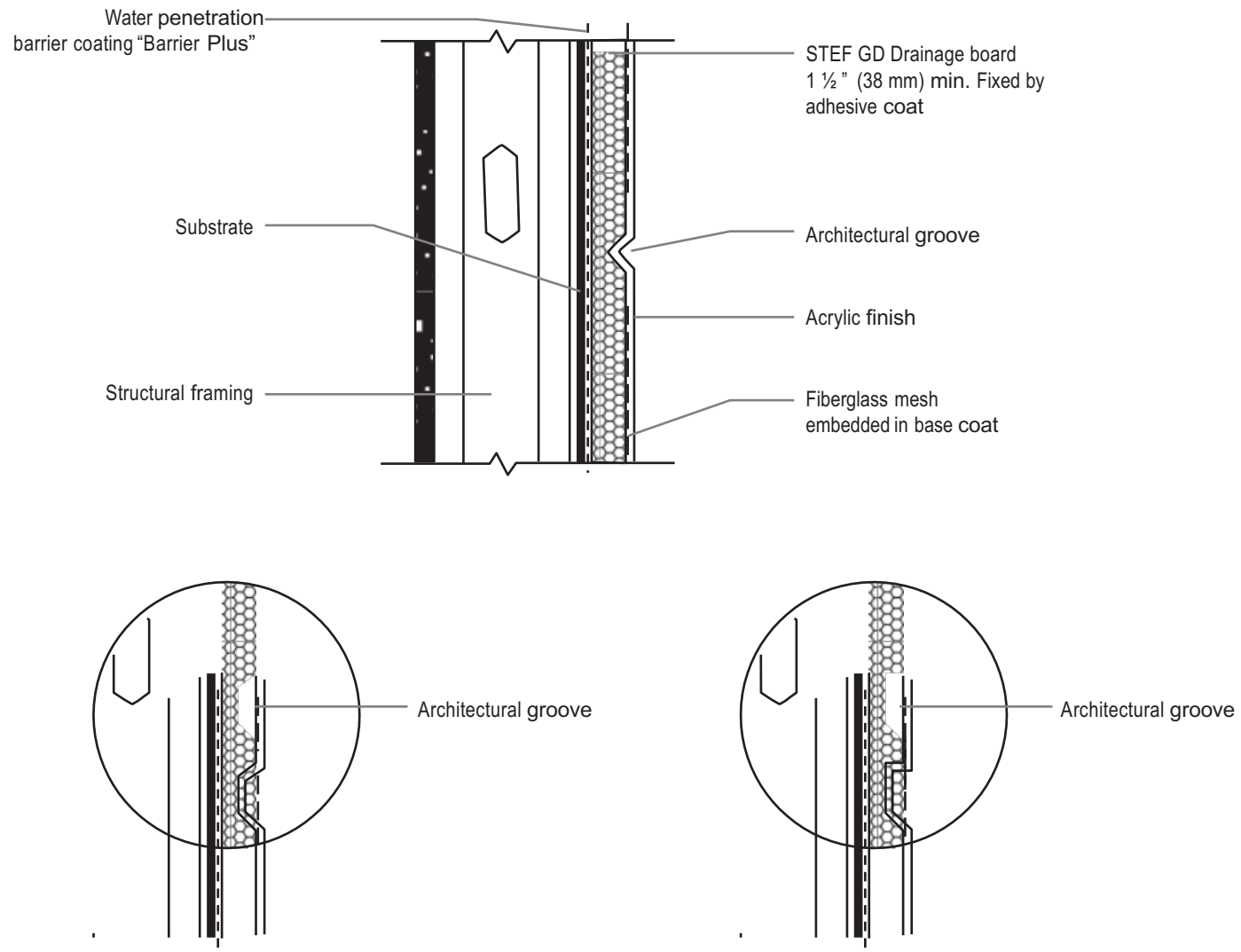
**Fig 6. Roof Standard detail - Vertical Construction Joint Detail**



**Fig 7. Insulation Board Layout**

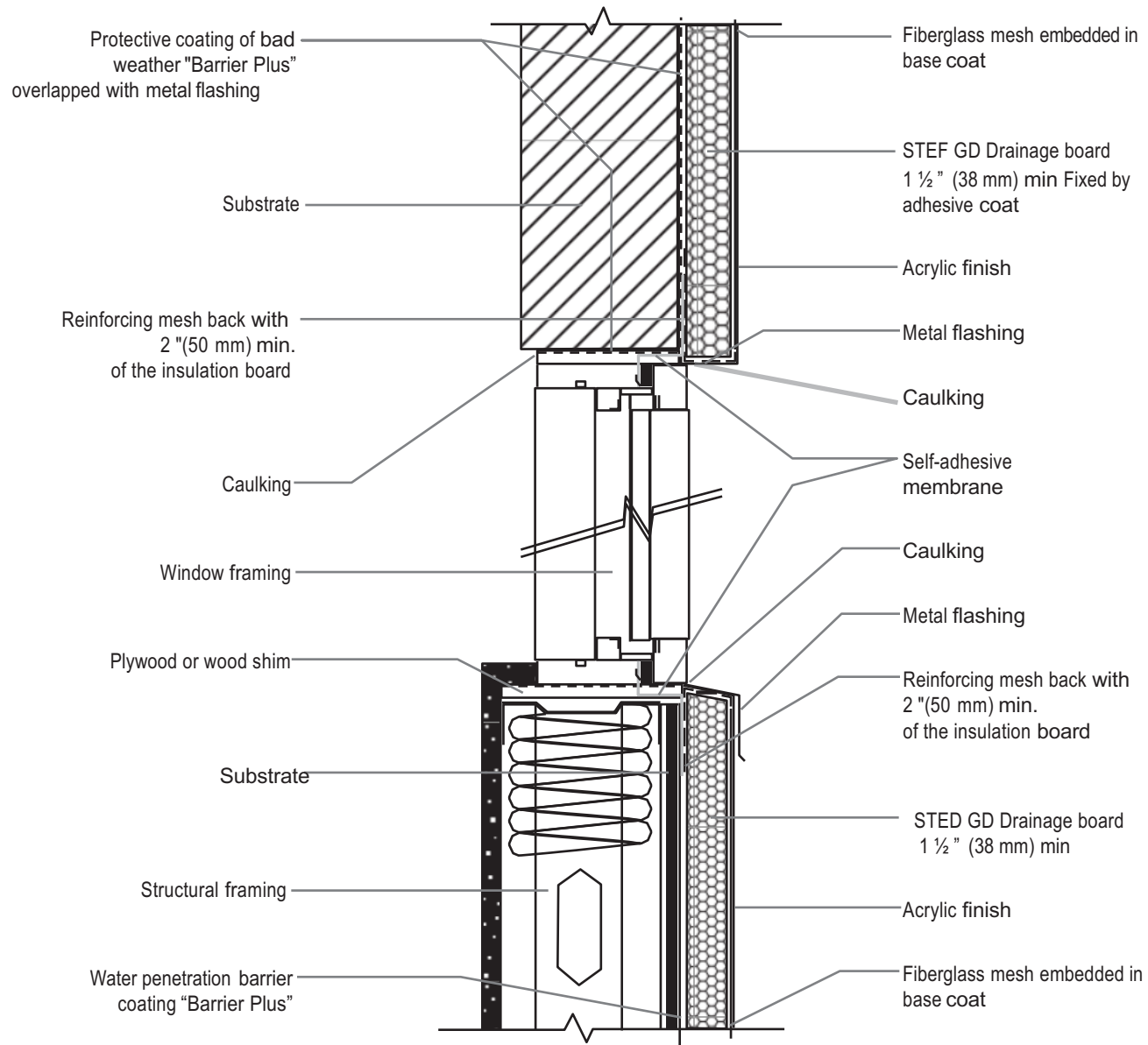


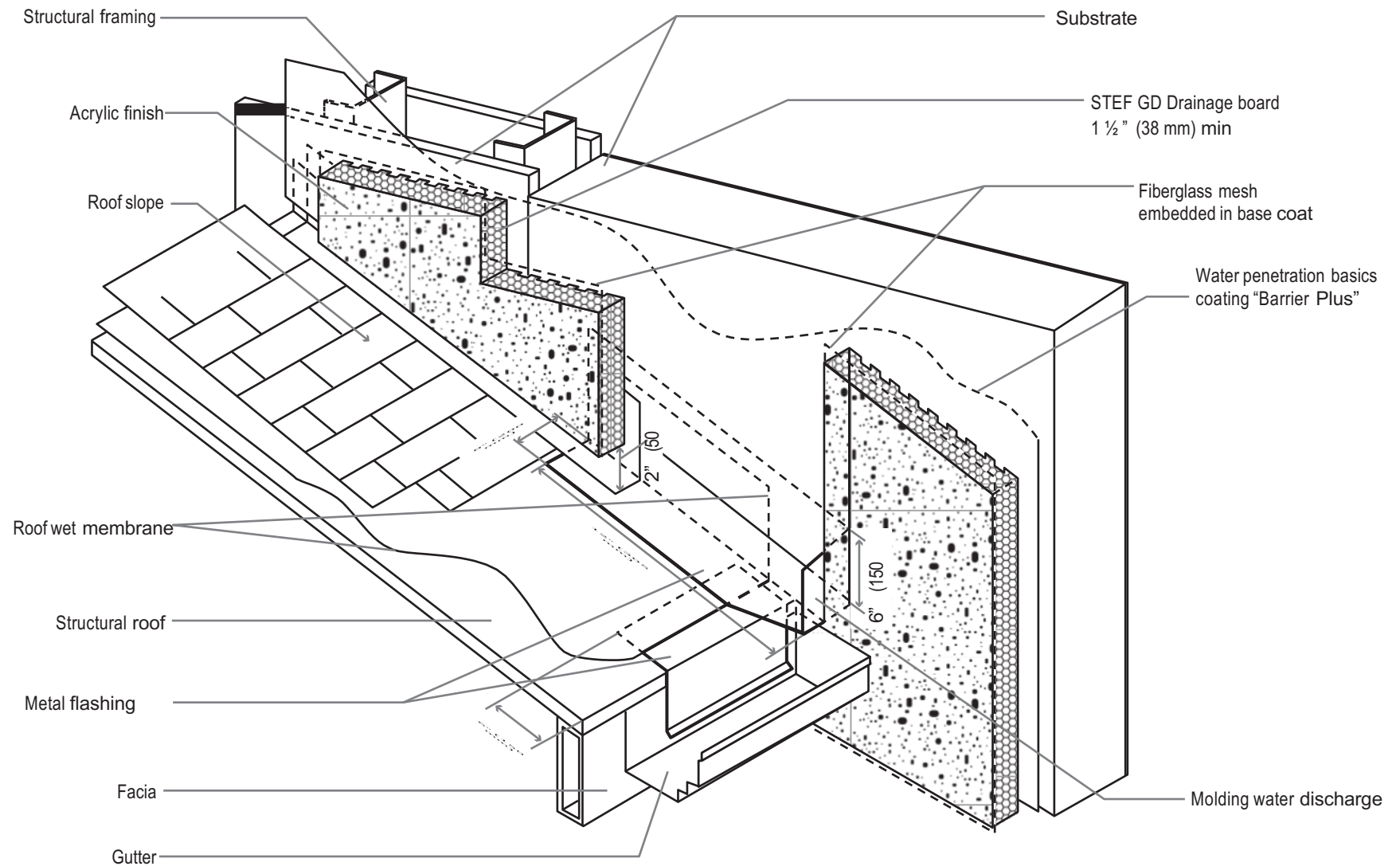
**Fig 8. Horizontal Construction Joint Detail**



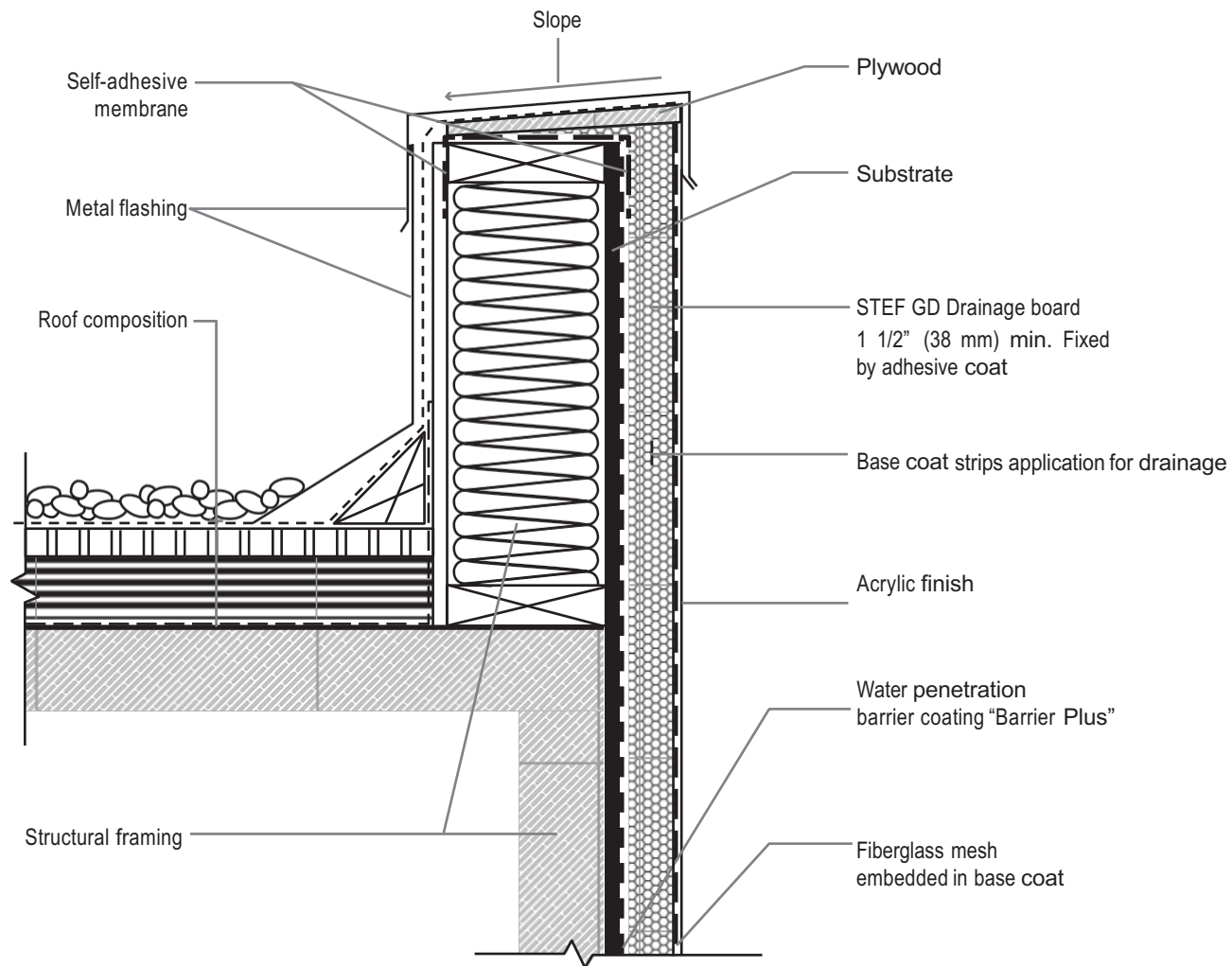
**Fig. 10-11-12 Design Architectural Grooves**



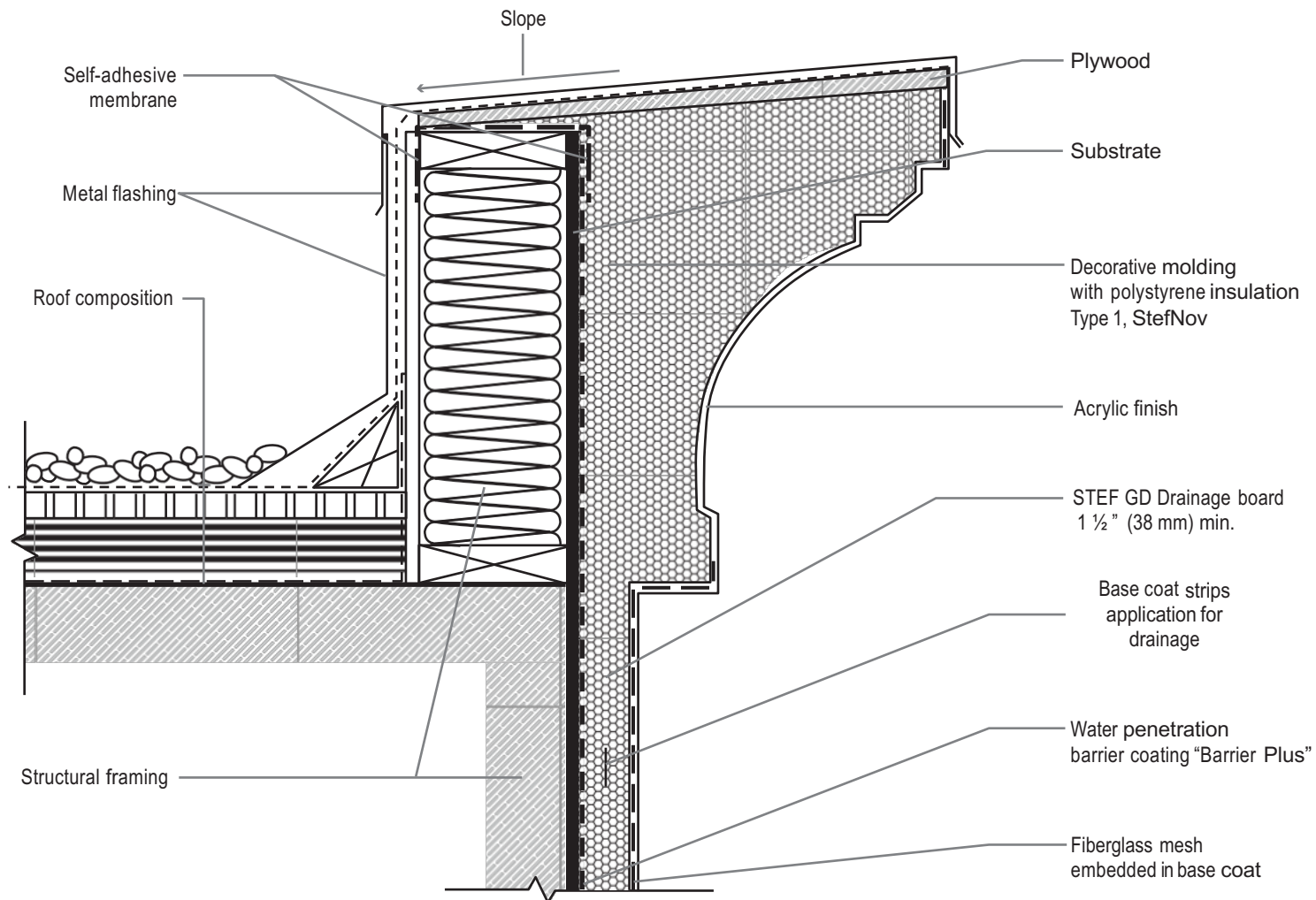
**Fig. 13 Window Aluminum Flashing Detail**



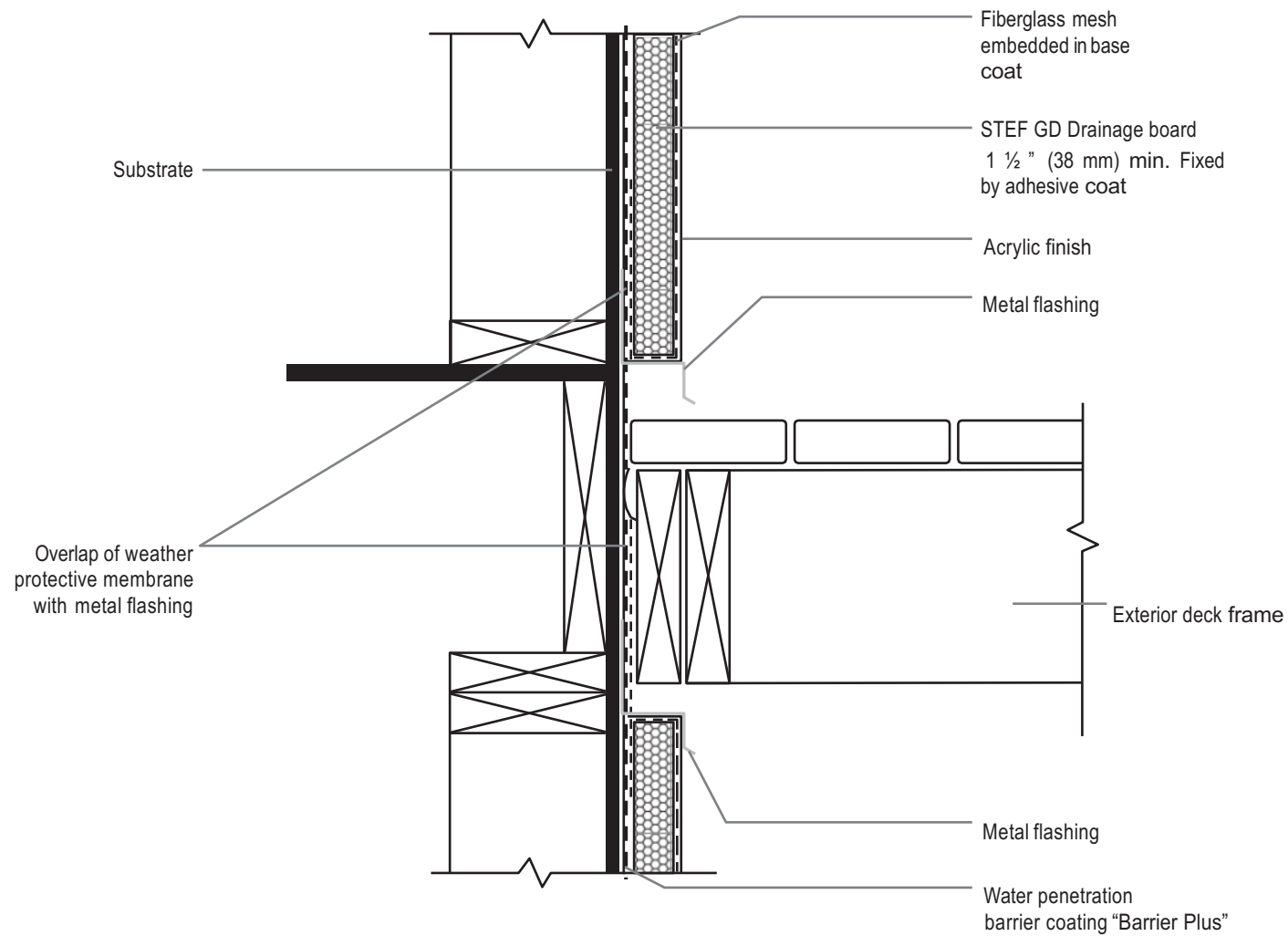
**Fig 14. Roof Junction Detail**



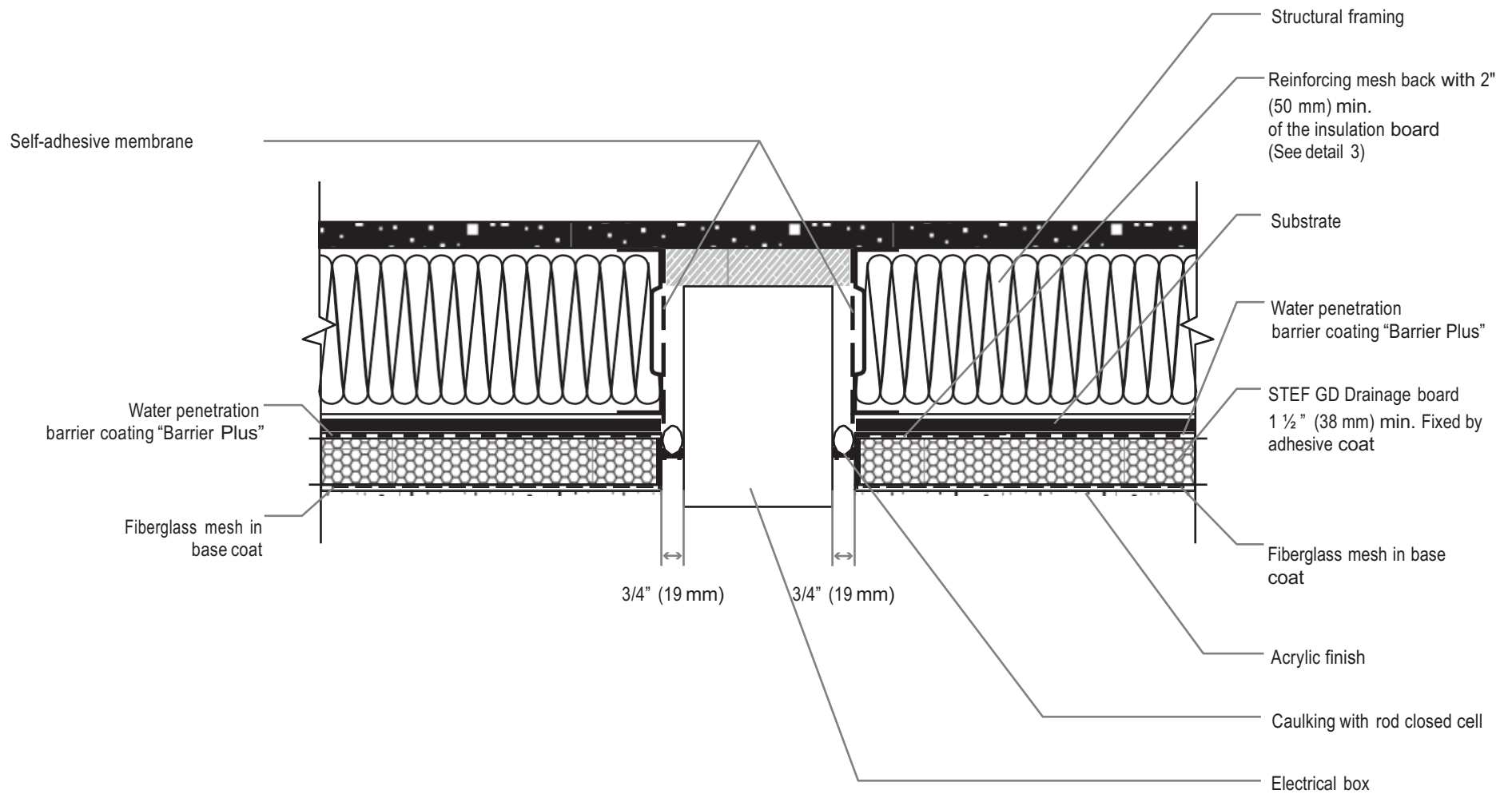
**Fig. 15. Roof Standard Detail**



**Fig.16. Roof Design Details**



**Fig. 17 Exterior Deck Detail**



**Fig.18 Electrical Box Opening Detail**