

Cement Board System

Stef Supra

System for concrete/cement board panels

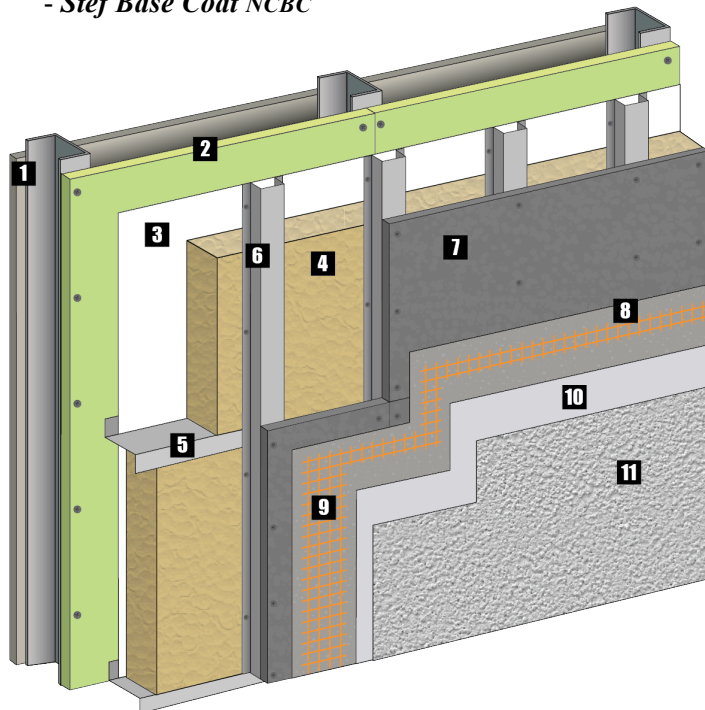
The **Stef Supra** is very flexible and is proven to protect the cement board panels against external elements. The Stef Supra allows for the option to integrate the Stef-Tek weather penetration barrier as a secondary line of protection prior to installing the furring. The **Stef Supra meets the requirements for non-combustible construction**. Used in commercial or residential projects.

Products used for installation

(See technical product data sheets for more information)

- *Fiberglass Mesh*
- *Stef-Tek*
- *Stef Base Coat NCBC*

- *Stef Roll-on*
- *Stef Finish & Stef Architectural Coat*



- 1** Steel structure
- 2** Substrate (Gypsum exterior)
- 3** Air and water penetration barrier membrane.
Stef-Tek can also be used as an adhesive
- 4** Insulation panel
- 5** Z bar
- 6** Vertical metallic furring
- 7** Light concrete panel with mechanical fastening
(rust-resistant self-penetrating screws)
- 8** *Stef Base Coat NCBC* base coat
- 9** Fiberglass mesh embedded in the base coat
- 10** *Stef Roll-on* primer coat
- 11** *Stef Finish & Stef Architectural Coat* finish coat

The application instructions and performance characteristics are based on information we believe to be reliable. They are offered to the best of our knowledge, but without guarantee, as conditions and methods of use of our products are beyond our control.

