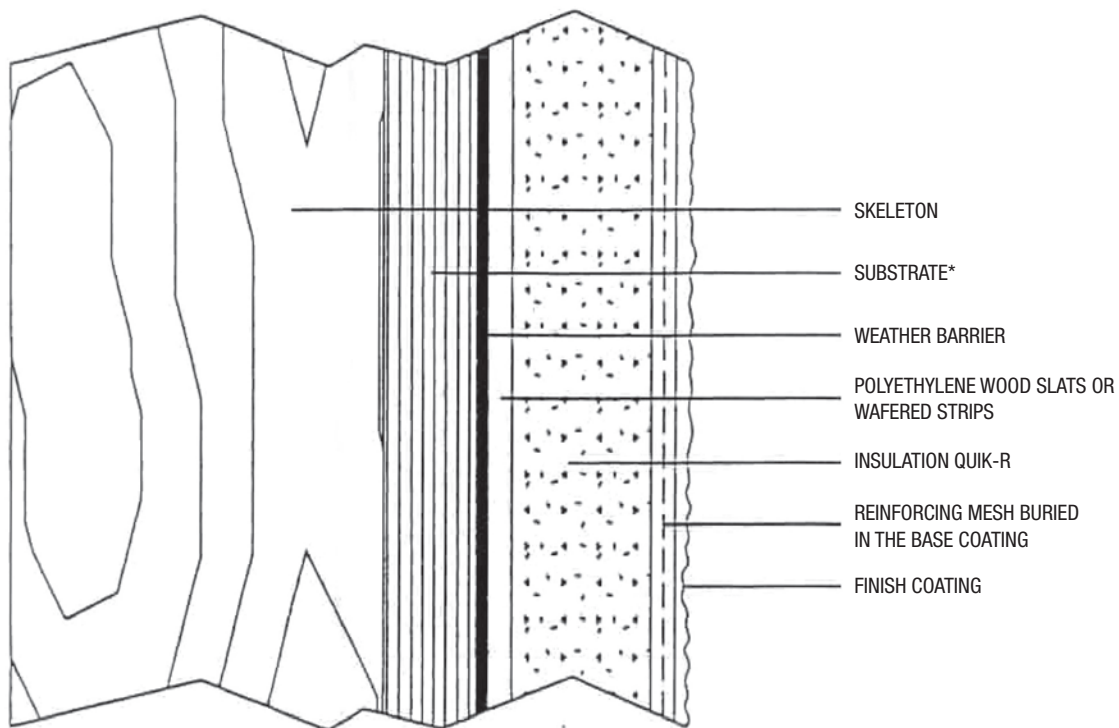
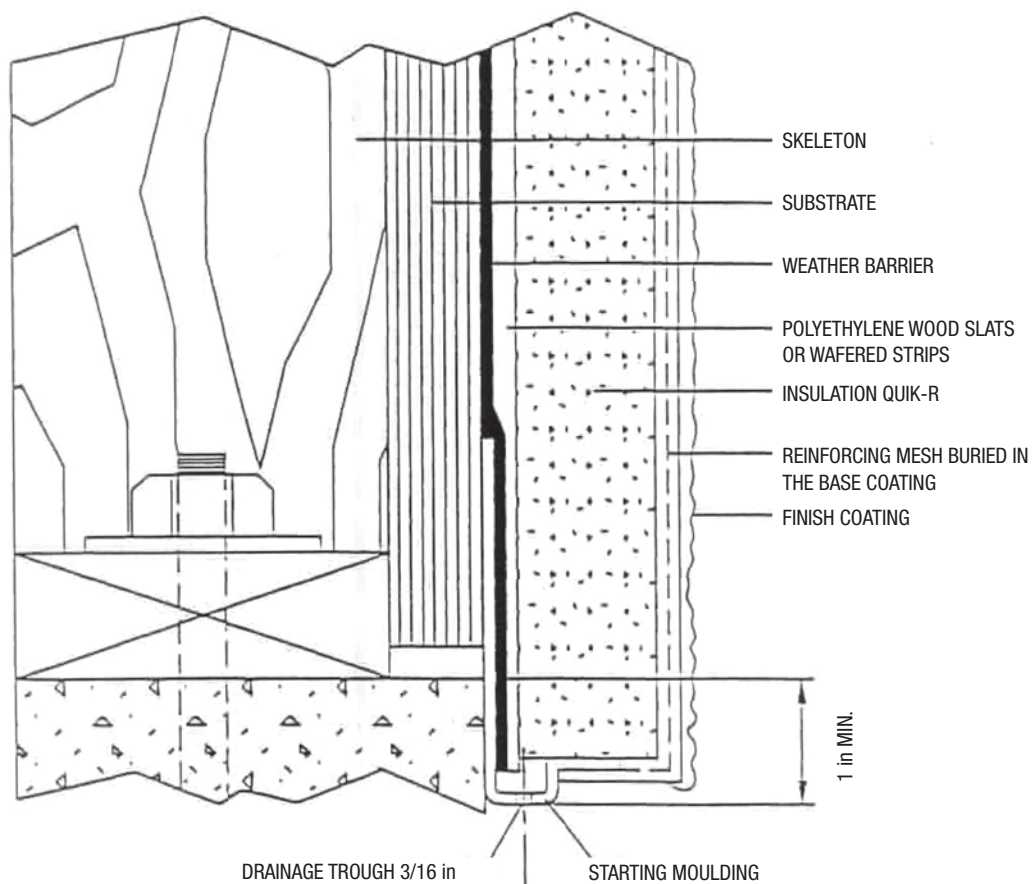


TYPICAL EXAMPLE OF A QUIK-VENT SYSTEM

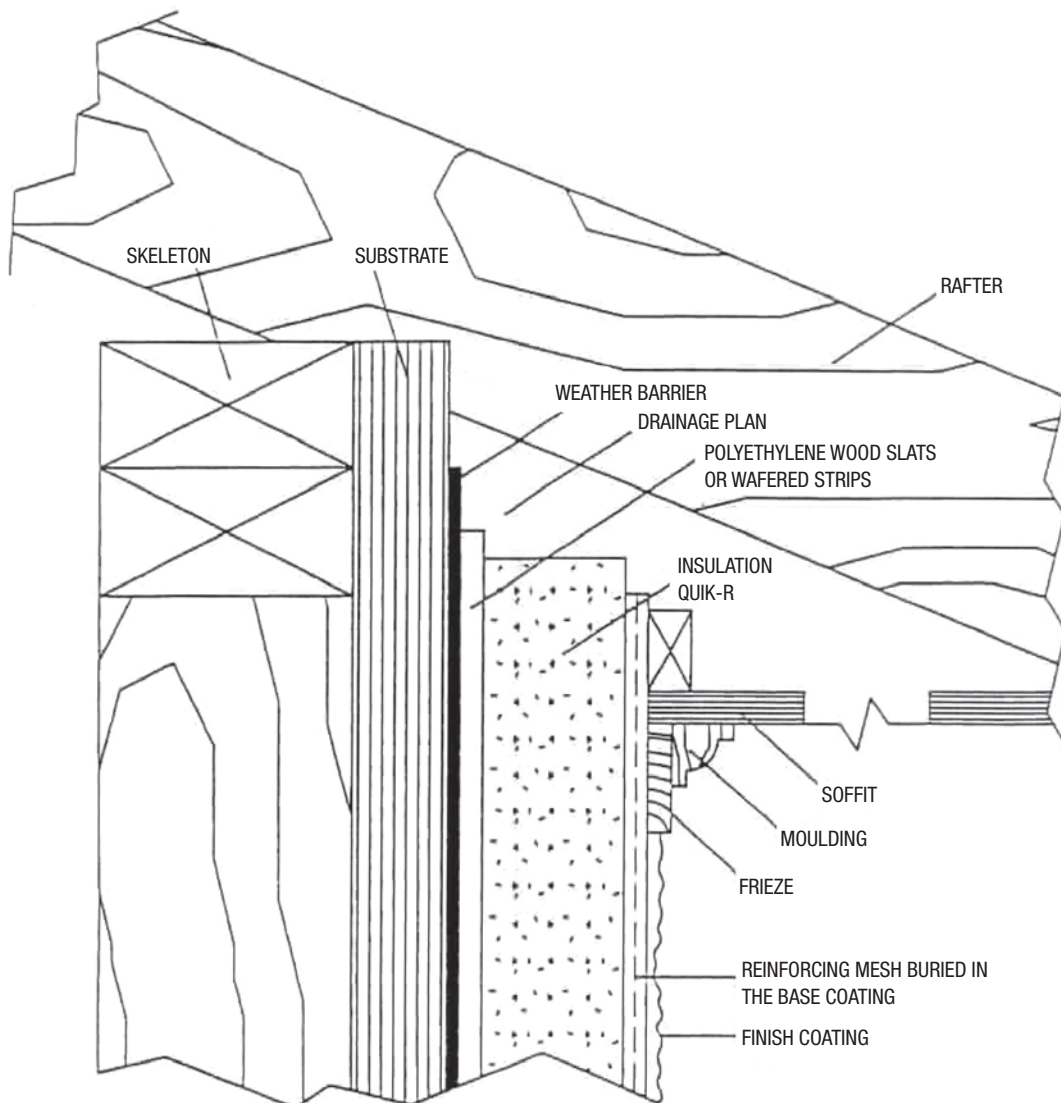


*OPTIONAL IF 1" THICK "QUIK R" IS USED

TERMINAISON À LA FONDATION

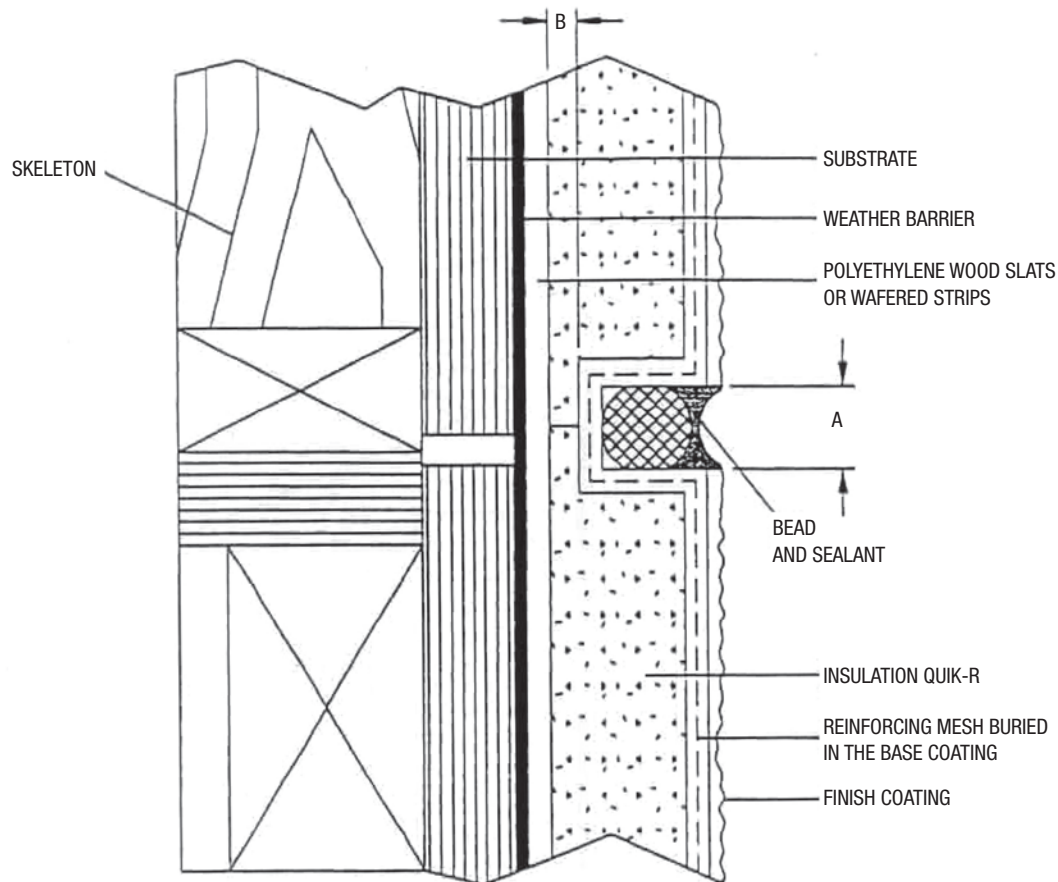


ENDING OF SOFFIT



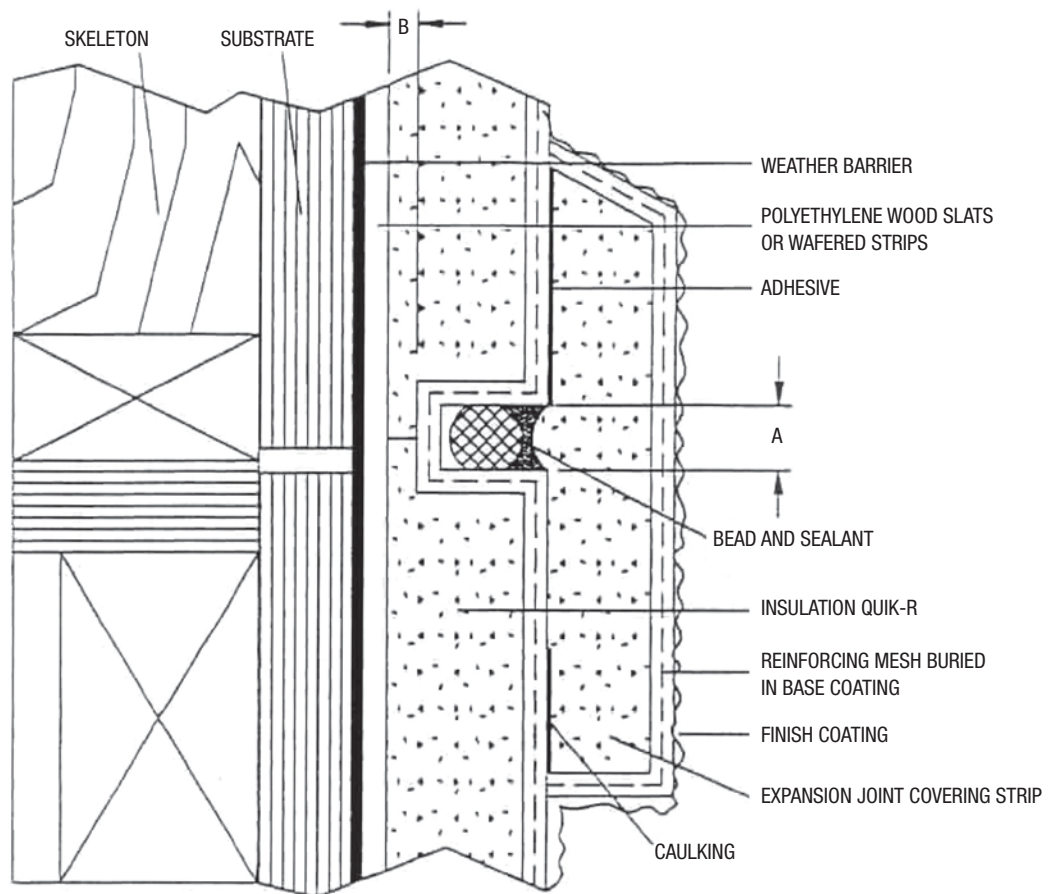
EXPANSION JOINT AT FLOOR LEVEL

(METHOD # 1)



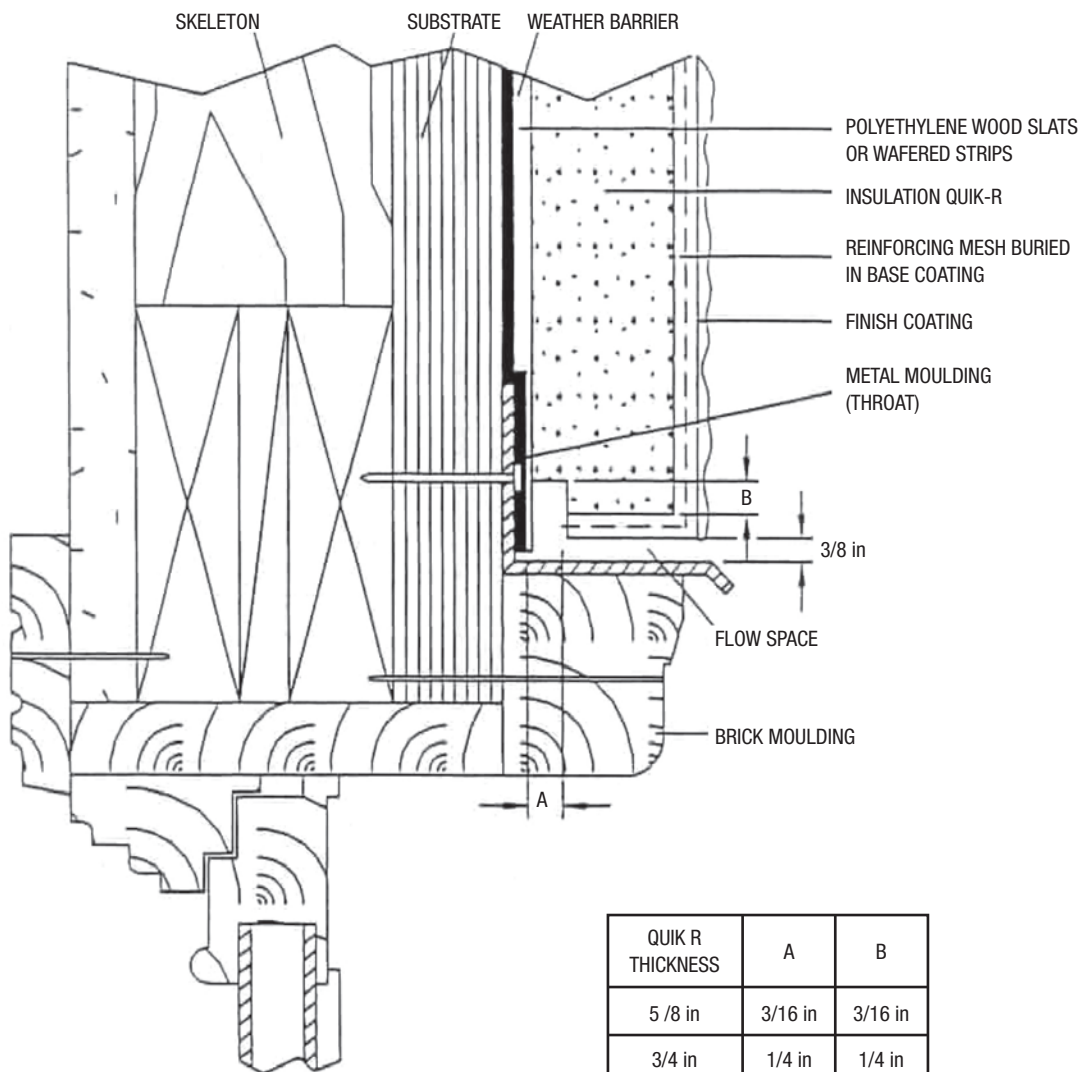
THICKNESS OF QUIK R	A	B	BEAD
	7/16 in	3/16 in	1/2 in
3/4 in	1/2 in	3/8 in	5/8 in
1 in	1/2 in	3/8 in	5/8 in

JOINT EXPANSION AT FLOOR LEVEL (METHOD # 2)

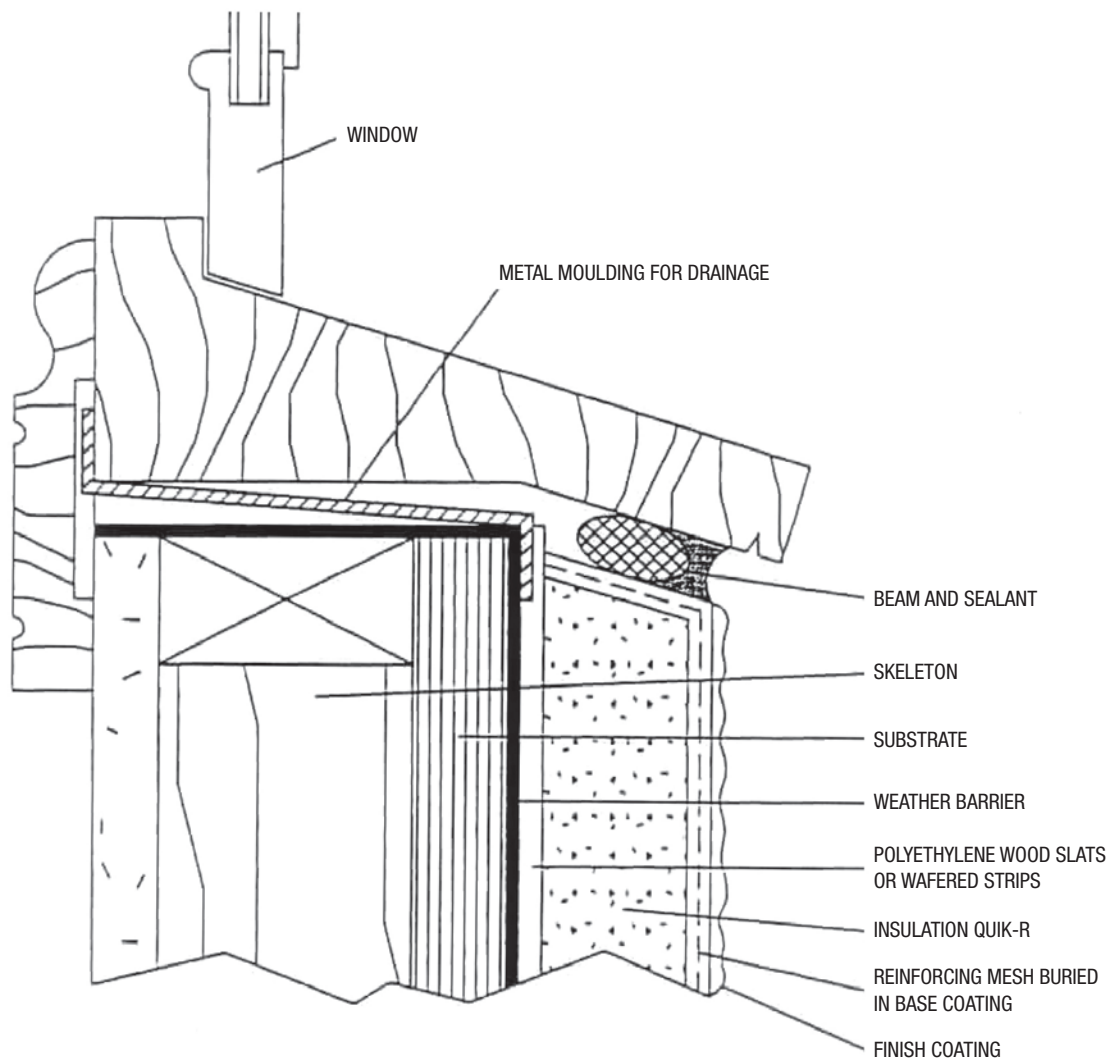


QUIK R THICKNESS	A	B	BEAD
5/8 in	7/16 in	3/16 in	1/2 in
3/4 in	1/2 in	3/8 in	5/8 in
1 in	1/2 in	3/8 in	5/8 in

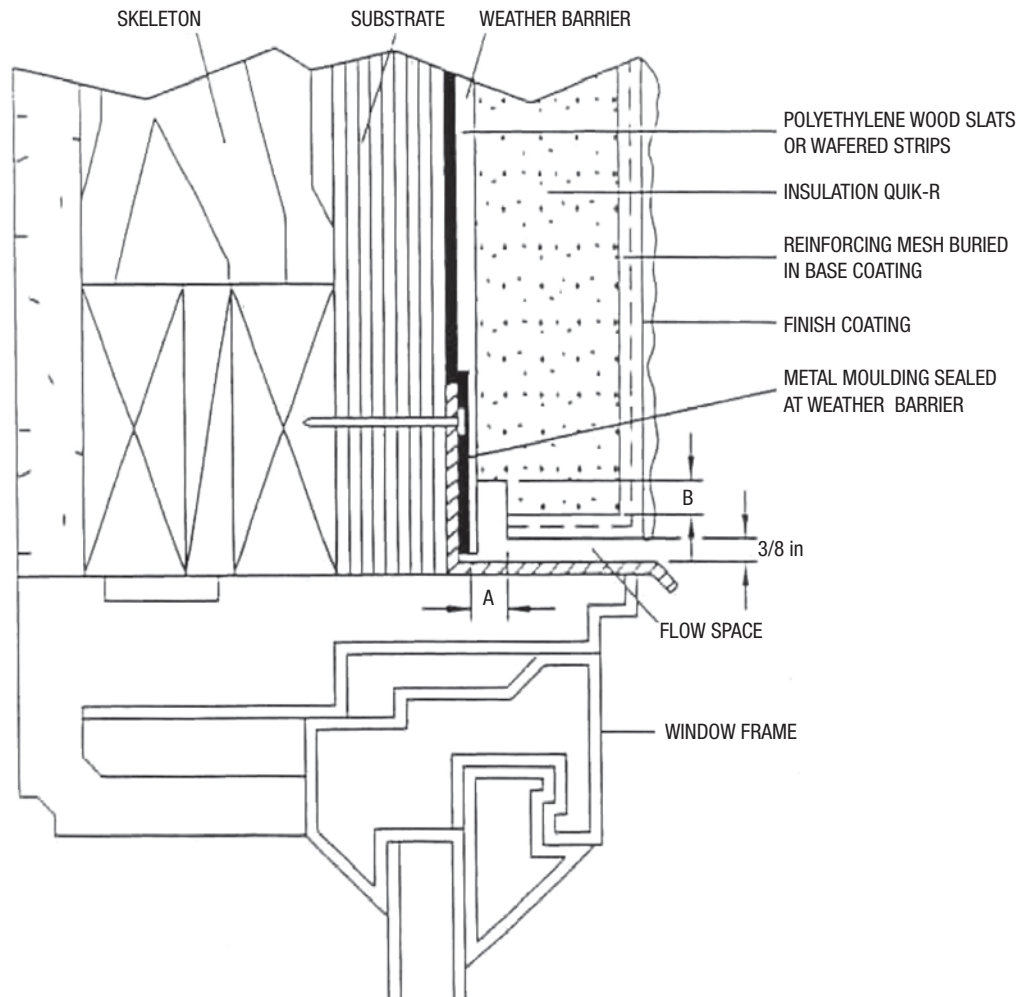
ENDING ABOVE A WINDOW (BRICK MOULDING)



ENDING UNDER WINDOW SILL

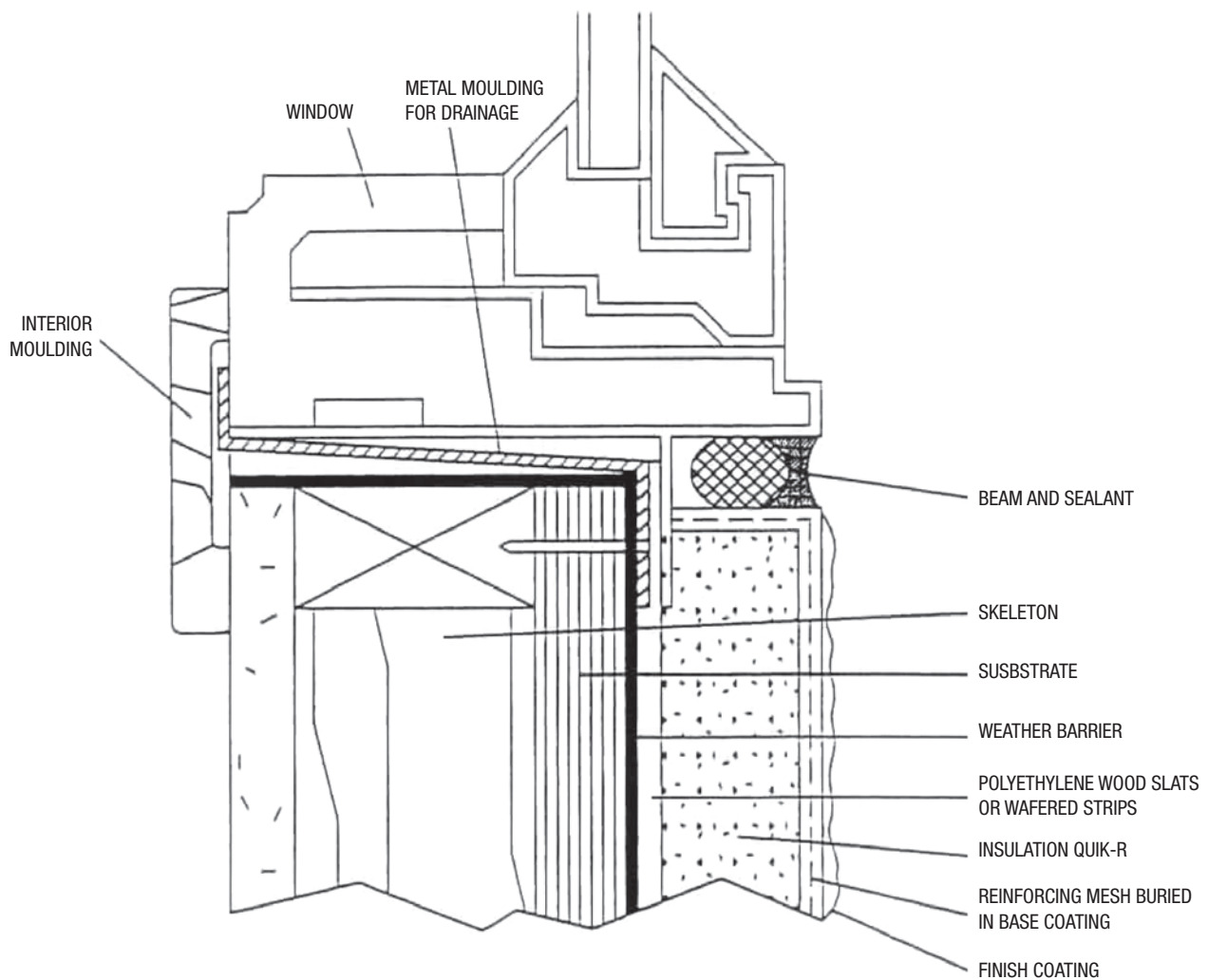


ENDING ABOVE A WINDOW

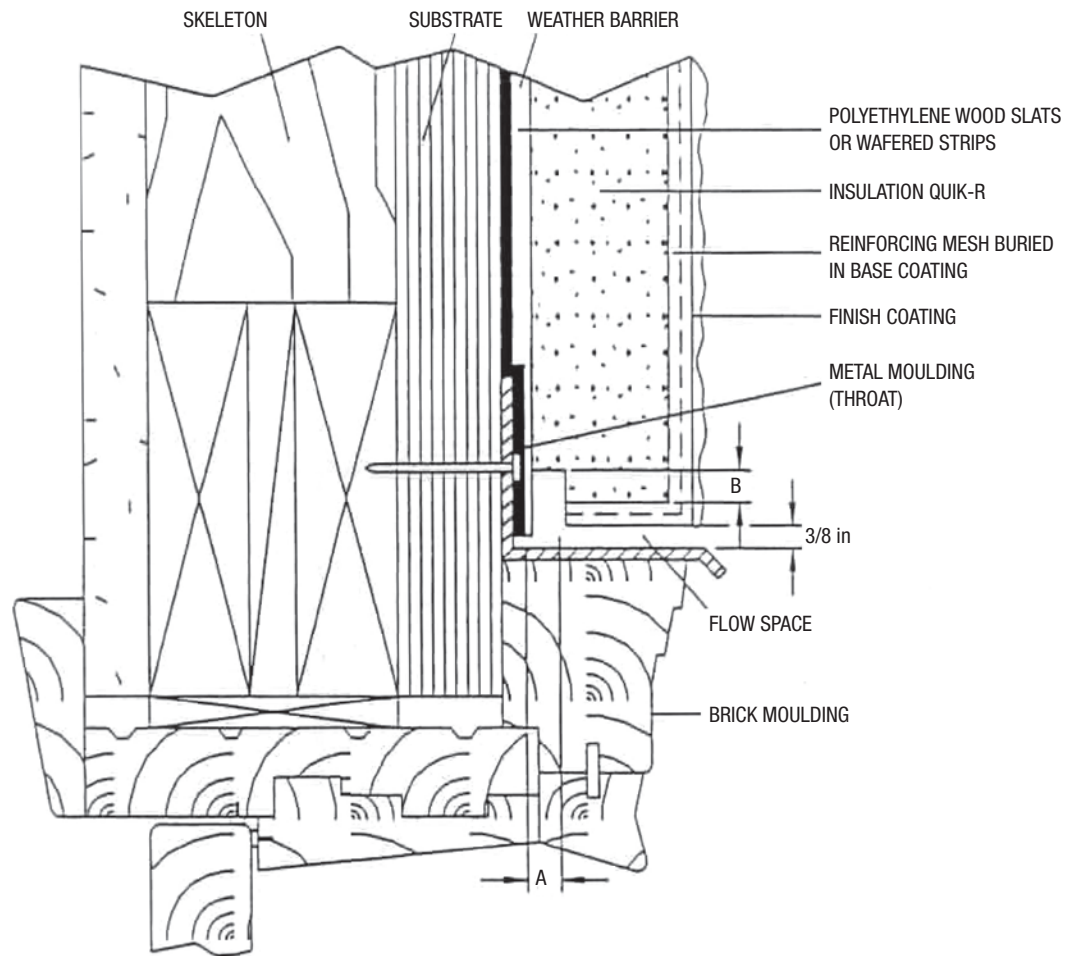


QUIK R THICKNESS	A	B
5 / 8 in	3/16 in	3/16 in
3/4 in	1/4 in	1/4 in
1 in	3/8 in	3/8 in

ENDING UNDER A WINDOW

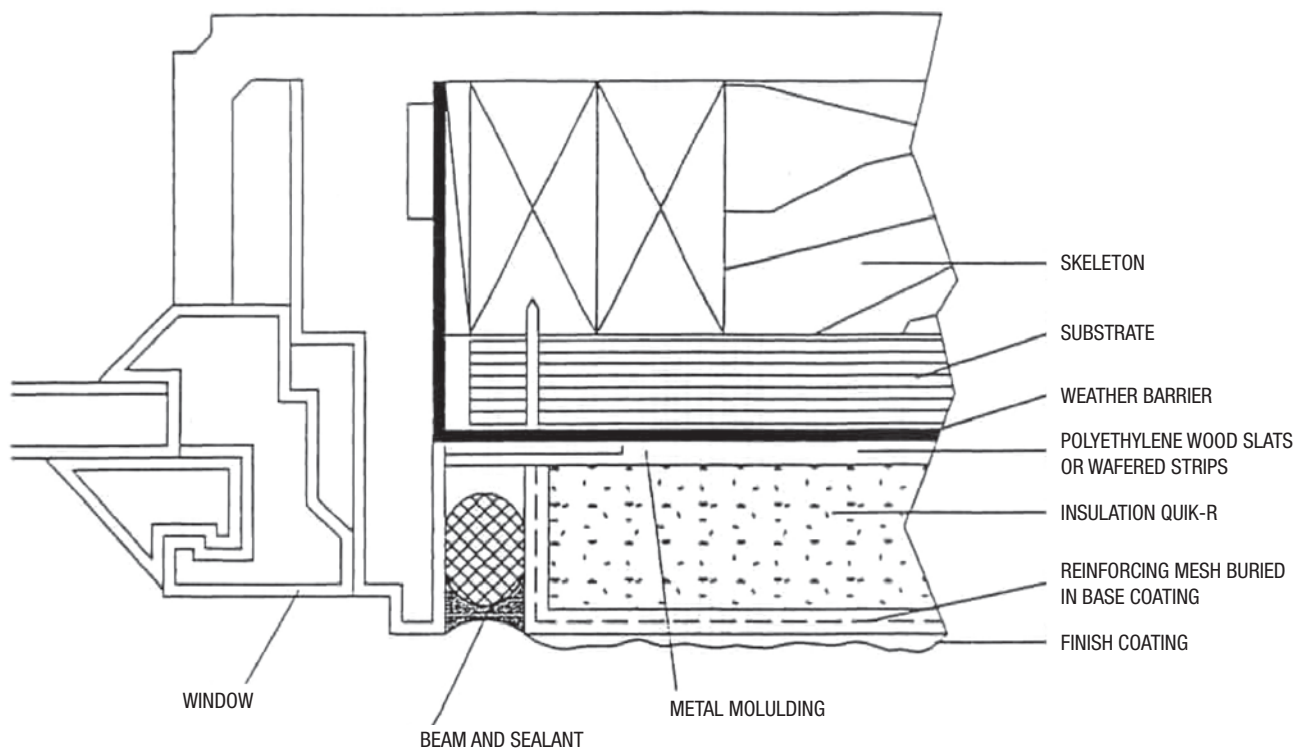


ENDING ABOVE A DOOR (BRICK MOULDING)

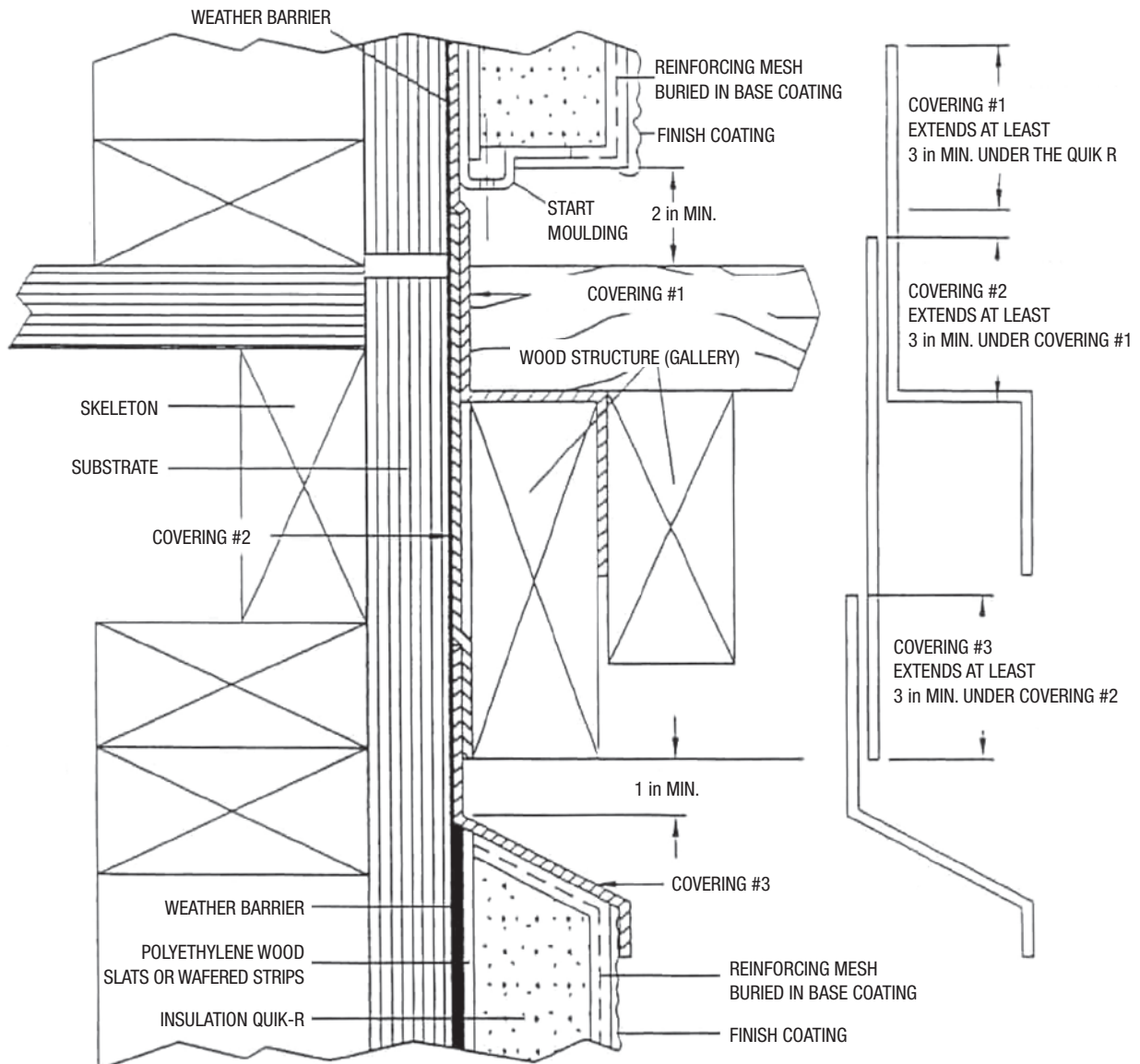


QUIK R THICKNESS	A	B
5 / 8 in	3/16 in	3/16 in
3/4 in	1/4 in	1/4 in
1 in	3/8 in	3/8 in

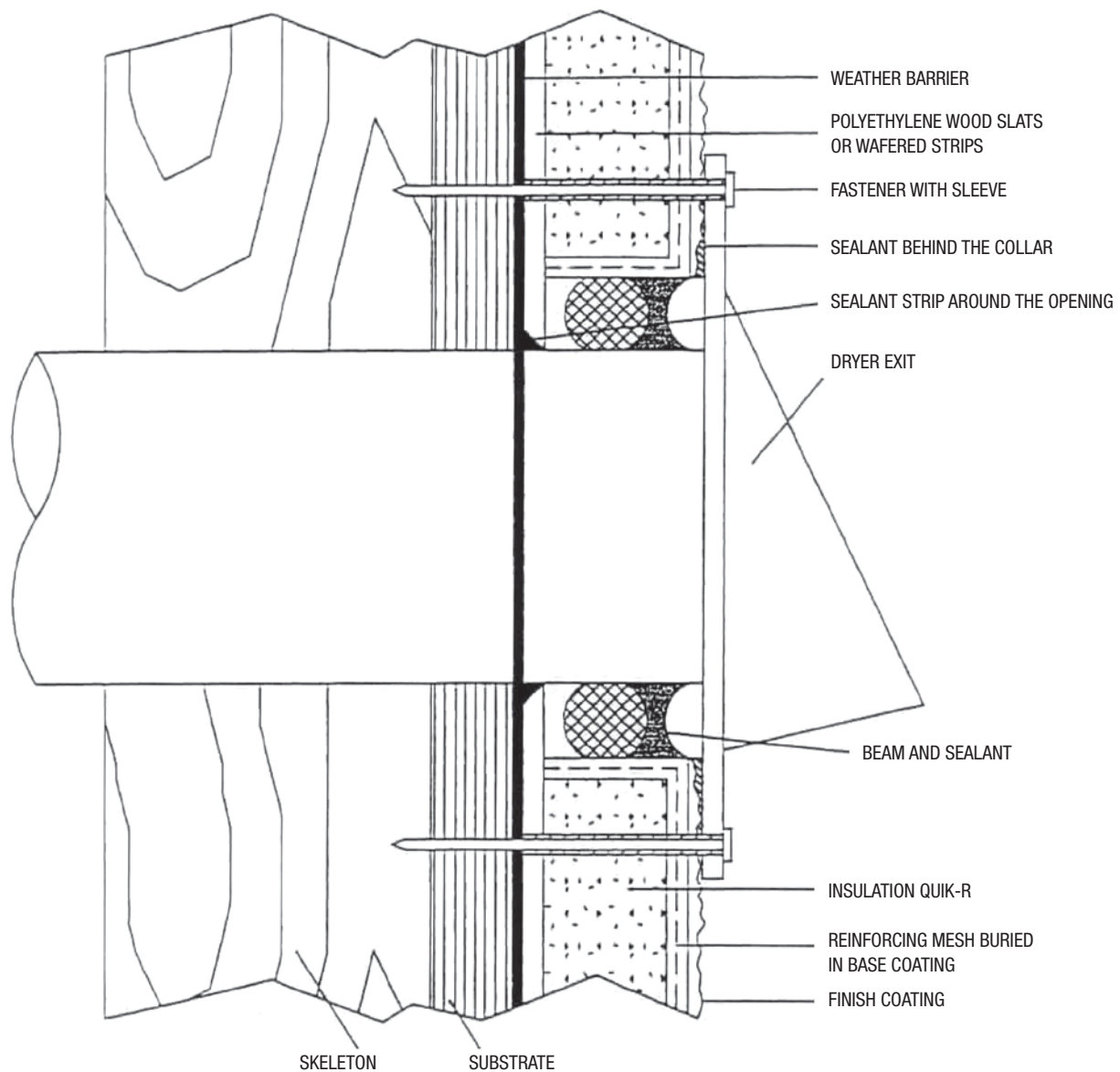
ENDING AT WINDOW AND DOOR UPRIGHTS



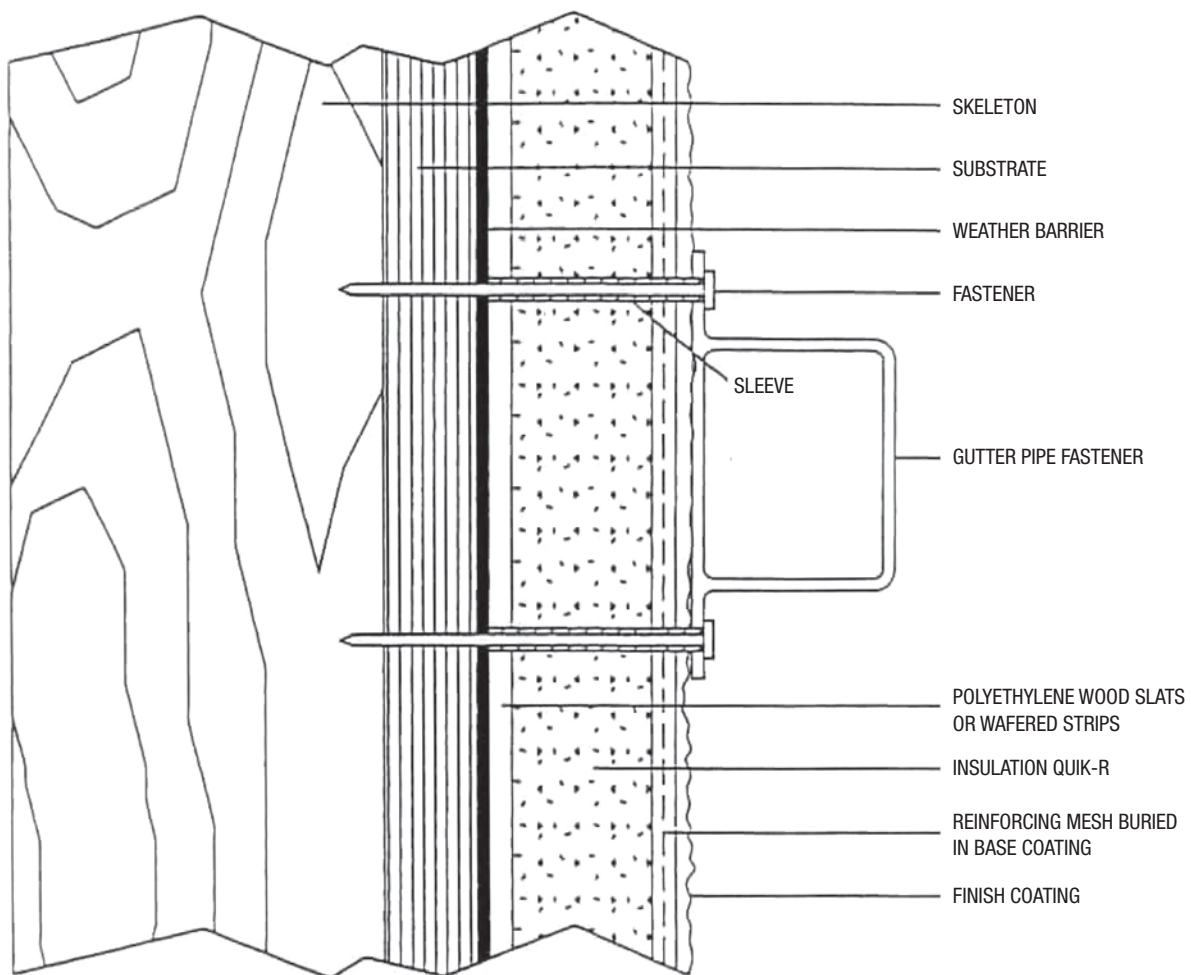
ENDINGS ABOVE AND UNDER A WOOD STRUCTURE (GALLERY)



INSTALLATION OF A DRYING DUCT

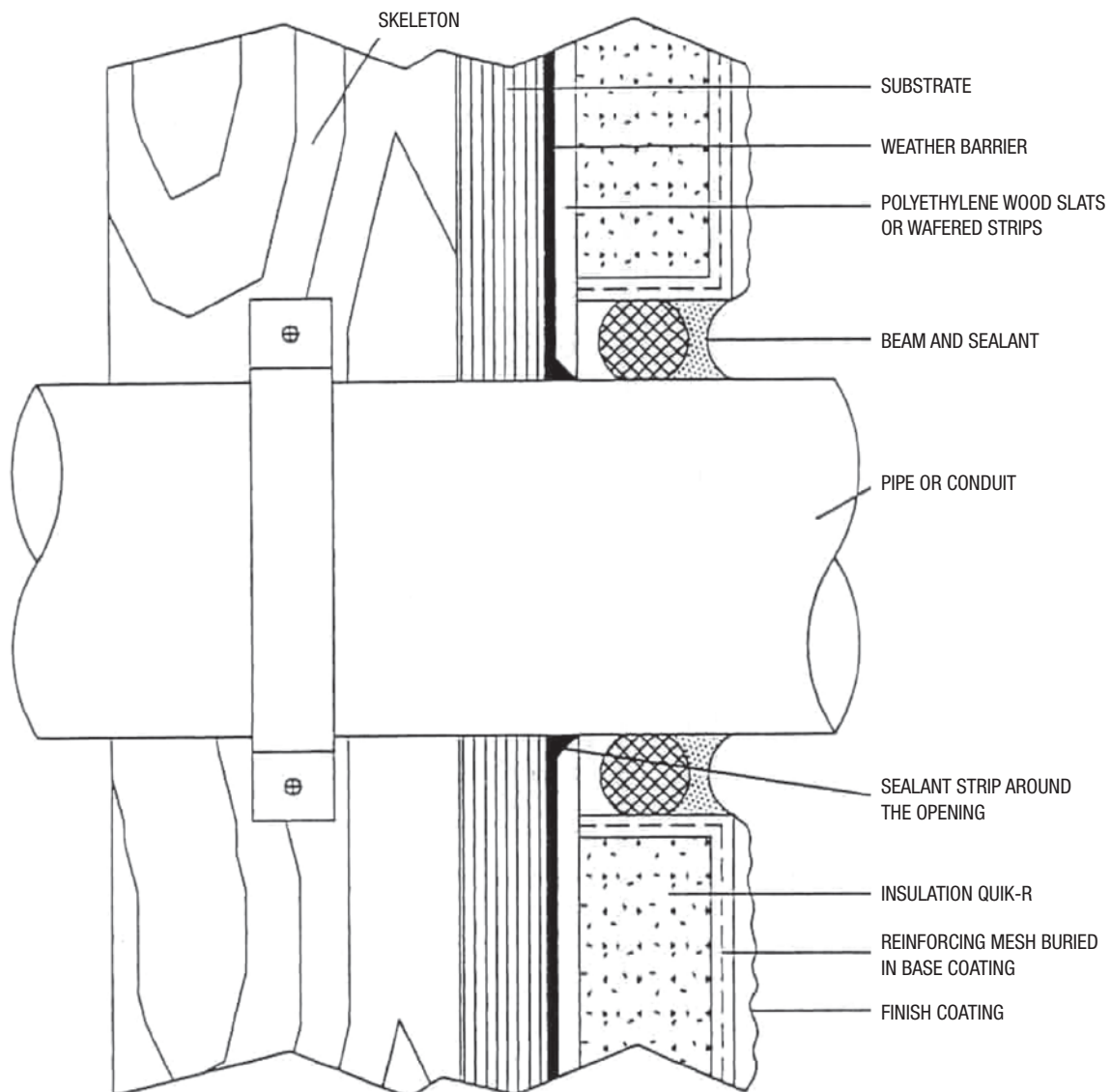


INSTALLATION OF A GUTTER PIPE

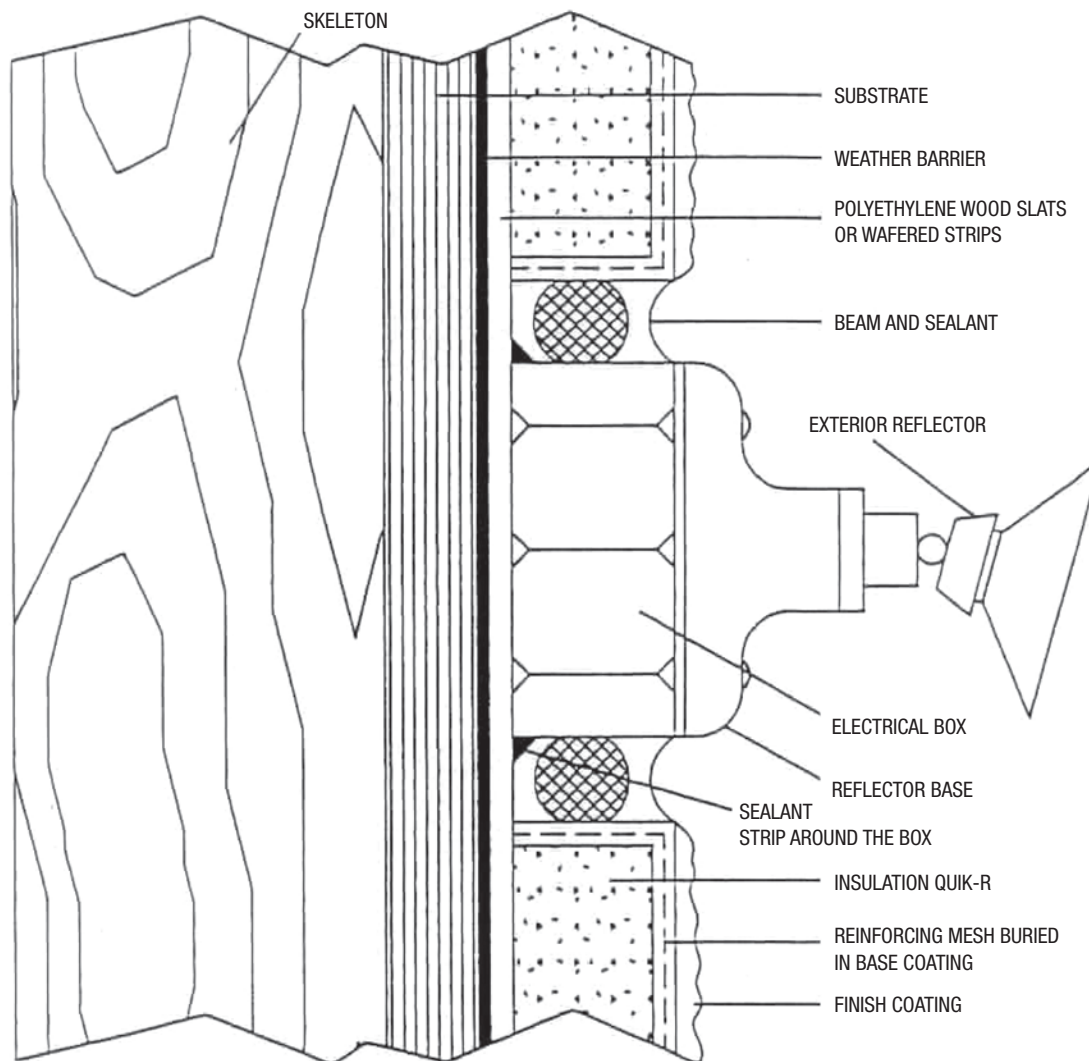


NOTE: A SEALANT MUST BE APPLIED BETWEEN THE GUTTER FASTENERS AND THE FINISH COATING.

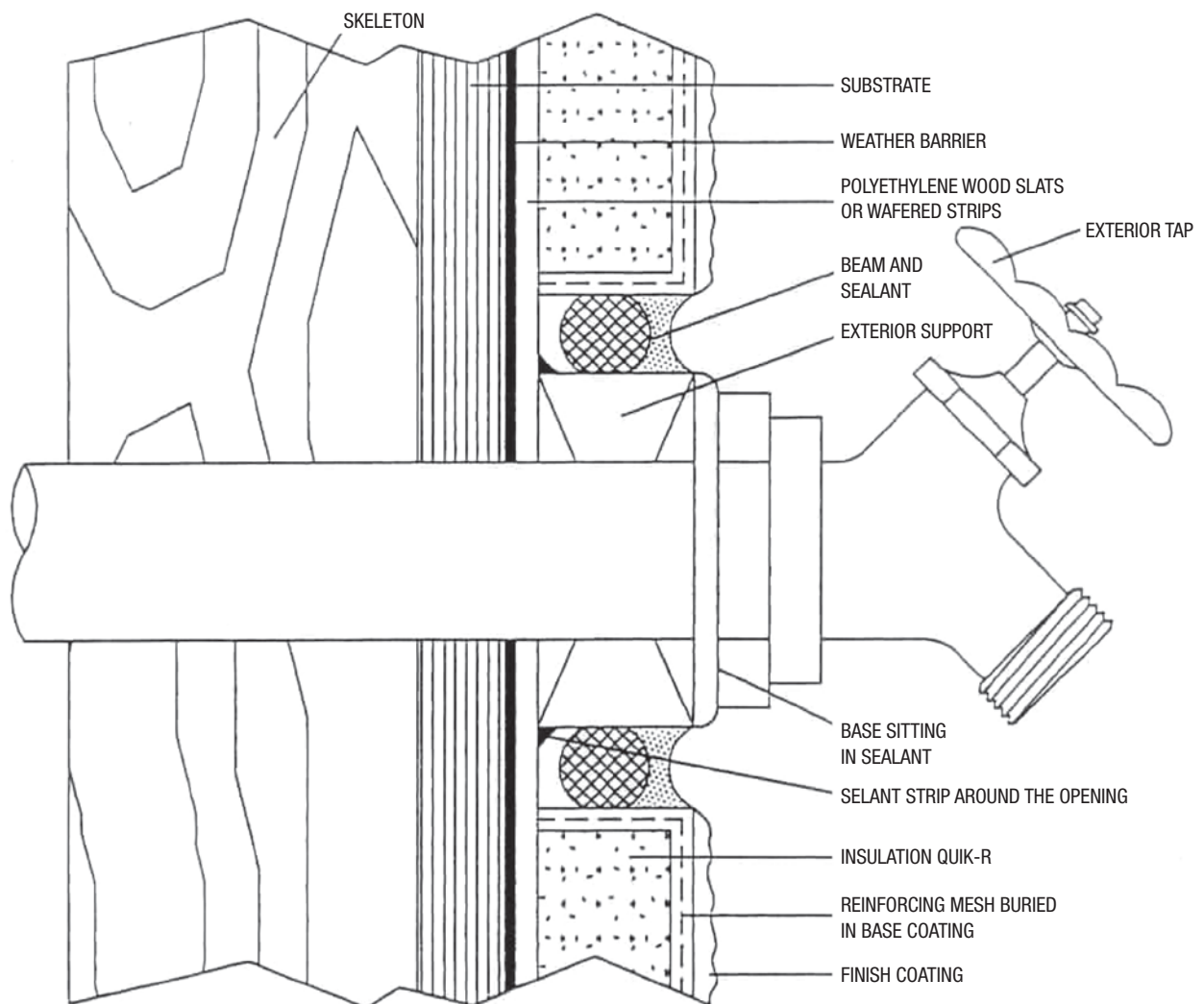
INSTALLATION OF A PIPE OR CONDUIT



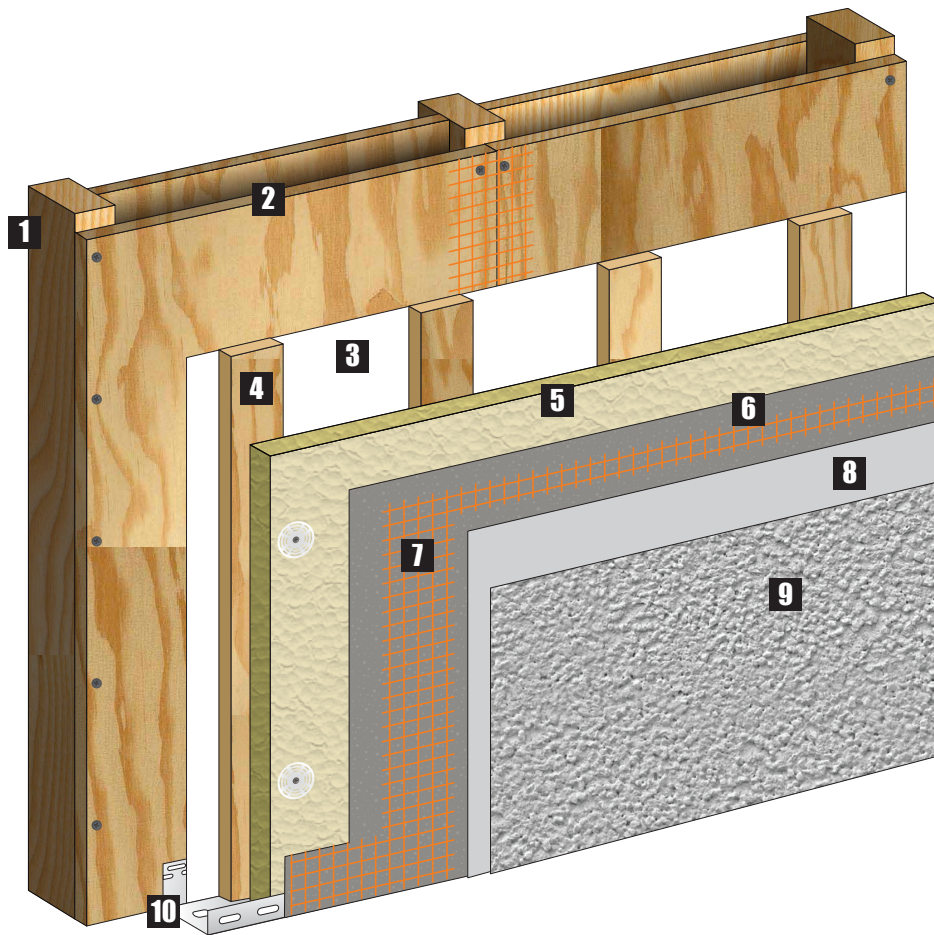
INSTALLATION OF AN EXTERIOR REFLECTOR



INSTALLATION OF AN EXTERIOR TAP

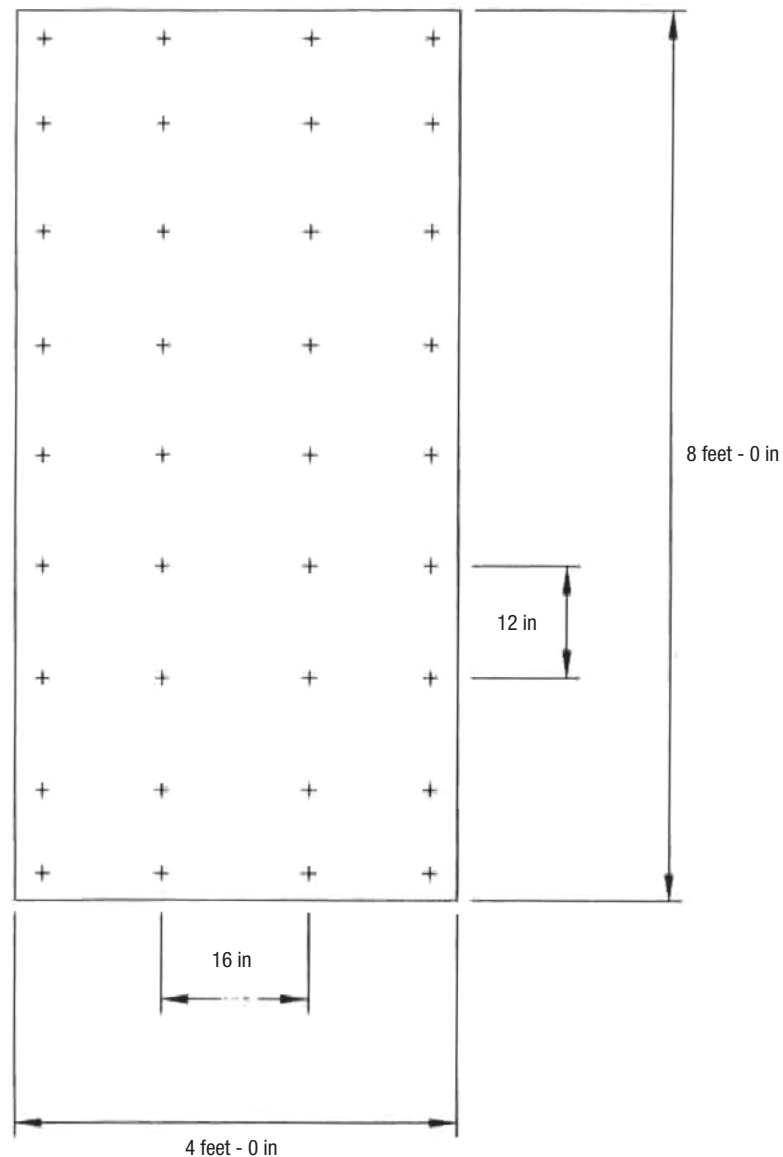


QUIK-VENT SYSTEM



- | | |
|--|---|
| 1 Wood structure | 6 <i>Stef Prep Coat</i> base coat |
| 2 Wood substrate or another approved | 7 Fiberglass mesh embedded in the base coat |
| 3 Air and water penetration barrier membrane.
<i>Stef-Tek</i> or another approved water-proofing system | 8 <i>Stef Roll-on</i> primer coat |
| 4 Vertical spacing furring | 9 <i>Stef Finish & Stef Architectural Coat</i> finish coat |
| 5 <i>Stef Insulation Board Quik-R</i> insulation panel with
mechanical fasteners to attach the insulating panels | 10 Stef starter moulding |

ILLUSTRATION SHOWING HOW TO INSTALL QUIK R



NOTE : QUIK R MUST BE ATTACHED MECHANICALLY TO THE STRUCTURE AS SHOWN IN THIS TECHNICAL DRAWING.
THE CELOTEX COMPANY AND STEF ASSUME NO RESPONSIBILITY IF THE FASTENERS ARE NOT INSTALLED AS SHOWN.

