

Direct Application Coating System

Stef Prima

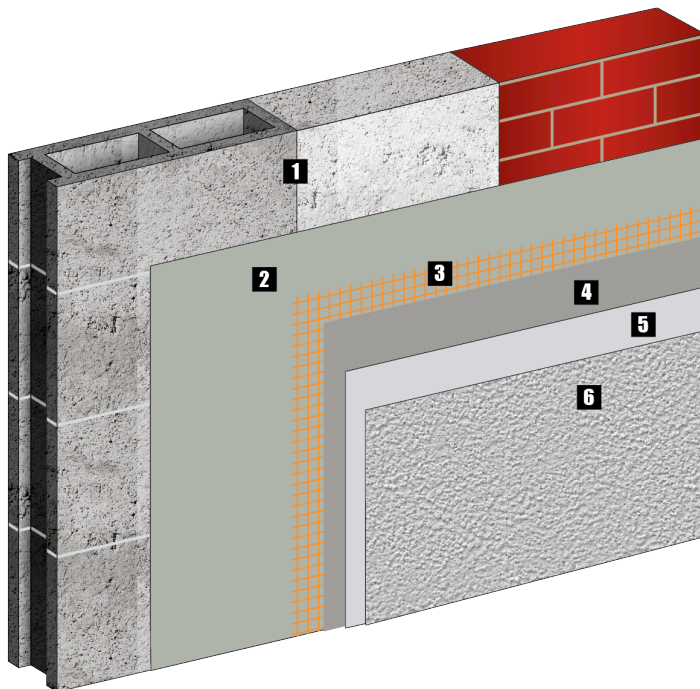
Coating system for wet-dash, bricks, concrete masonry, stucco and gypsum board substrates

A coating system, which incorporates high quality materials, applied directly onto the approved substrate. Stef Prima is very flexible and is proven to protect the substrate against the external elements. Stef Prima meets the requirements for non-combustible construction. **Used in commercial or residential projects where the direct application of coatings on a substrate is required.**

Products used for installation

(See technical product data sheets for more information)

- Fiberglass Mesh
- Stef Prep Coat
- Stef Finish & Stef Architectural Coat
- Stef 5000
- Stef Roll-on



- 1** Substrate (Concrete, cement or brick)
- 2** Stef 5000 coating
- 3** Fiberglass mesh
- 4** Stef Prep Coat base coat
- 5** Stef Roll-on primer coat
- 6** Stef Finish & Stef Architectural Coat finish coat

The application instructions and performance characteristics are based on information we believe to be reliable. They are offered to the best of our knowledge, but without guarantee, as conditions and methods of use of our products are beyond our control.

