

*Water repellent coating system with smooth finish coating*

# Stef Primax Plus

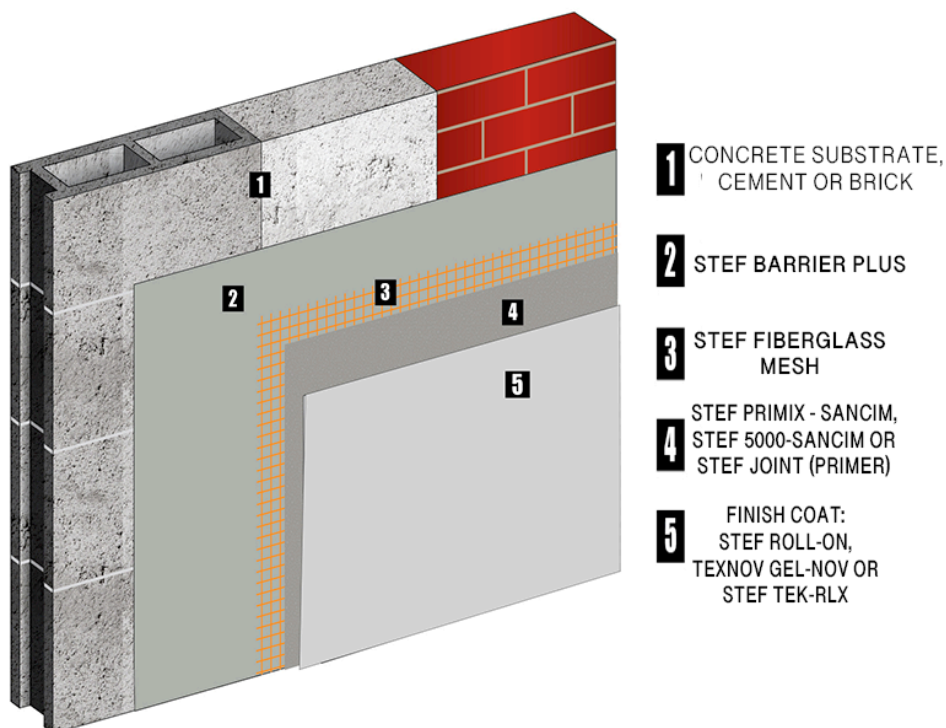
*Coating system for wet-dash, bricks, concrete masonry, stucco and gypsum board substrates*

A coating system, which incorporates high quality materials, applied directly onto the approved substrate. **STEF PRIMAX PLUS** is very flexible and is proven to protect the substrate against the external elements. **STEF PRIMAX PLUS** meets the requirements for non-combustible construction. **Used in commercial or residential projects where the direct application of coatings on a substrate is required.**

## Products used for installation

(See technical product data sheets for more information)

- Fiberglass Mesh
- Stef Barrier Plus
- For finish:
- Stef Primix –
- Stef Roll-on
- Stef Roll-On, Texnov GelNov ou Stef Tex RLX
- Sancim, Stef 5000-
- Sancim or Stef
- Joint



The application instructions and performance characteristics are based on information we believe to be reliable. They are offered to the best of our knowledge, but without guarantee, as conditions and methods of use of our products are beyond our control.

