



### *Exterior Insulation and Finish System (EIFS)*

# *Stef Impermea Drainscreen*

### *EIF System for wood and other approved substrates*

Pressure equalized EIF System that incorporates a secondary line of protection in conjunction with geometrically defined drainage features in the Type 1 **Stef GD Drainage Board / Impermea**. The EIF System integrates a Stef-Tek water penetration barrier, which is also used as an adhesive to secure the Stef GD Drainage Boards to the substrate. **Used for residential or commercial construction. Includes application on wood substrates.**

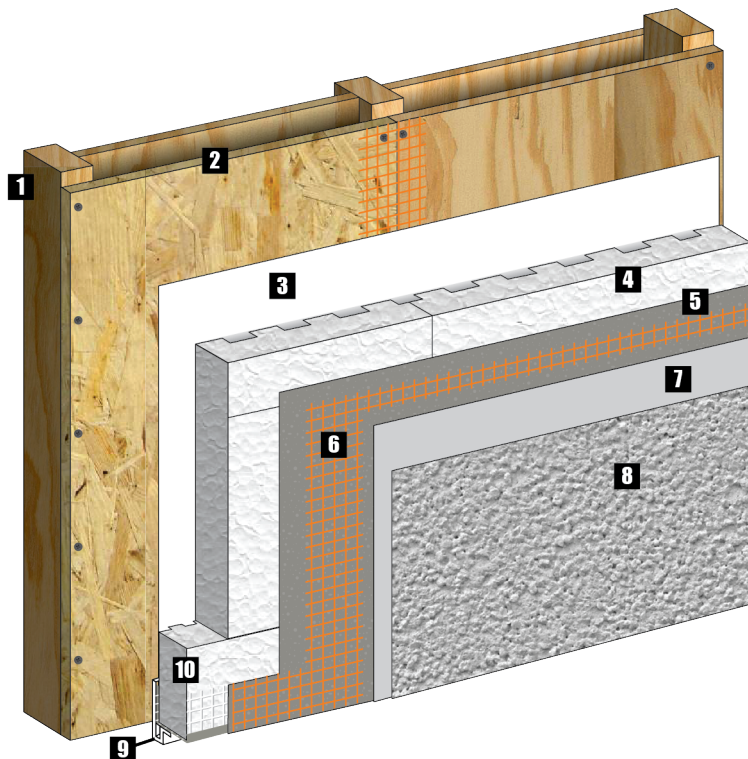
The **Stef Impermea / Drainscreen** system meets the requirements of CCMC report #13232-R

### **Products used for installation**

(See technical product data sheets for more information)

- **Stef GD Drainage Board / Impermea**
- **Fiberglass Mesh**
- **Stef-Tek**

- **Stef Prep Coat**
- **Stef Roll-on**
- **Stef Finish & Stef Architectural Coat**



- 1** Steel or wood structure
- 2** Wooden substrate (Aspenite or plywood)
- 3** Air and water penetration barrier membrane. *Stef-Tek* is also used as an adhesive
- 4** **Stef GD Drainage Board / Impermea** grooved insulation panel
- 5** **Stef Prep Coat** base coat
- 6** Fiberglass mesh embedded in the base coat
- 7** **Stef Roll-on** primer coat
- 8** **Stef Finish & Stef Architectural Coat** finish coat
- 9** PVC Starter Strip
- 10** Grooved insulation starter pre-coated strip with mesh buried in base coating